

COTMA TRIVIA QUIZ



Adelaide 2012

Rounds 1, 2, 3, 4

Compiled by Bob Pearce and David Critchley

TRIVIA RULES

- Switch off mobile phones and electronic devices. Teams found using electronic devices will have to shout a round of drinks for every other team.

Round 1 – Question 1

Scavenger Hunt –

To score a point for this question:

*At the end of this round bring the
Scorer either a tram ticket - or a coin
minted in 2002.*

Round 1 – Question 2

What was the nickname of tram No. 33 of the Wellington Corporation Tramways?



Round 1 – Question 3

Among the Victorian provincial tramways, what is unusual about No. 13 in Geelong?

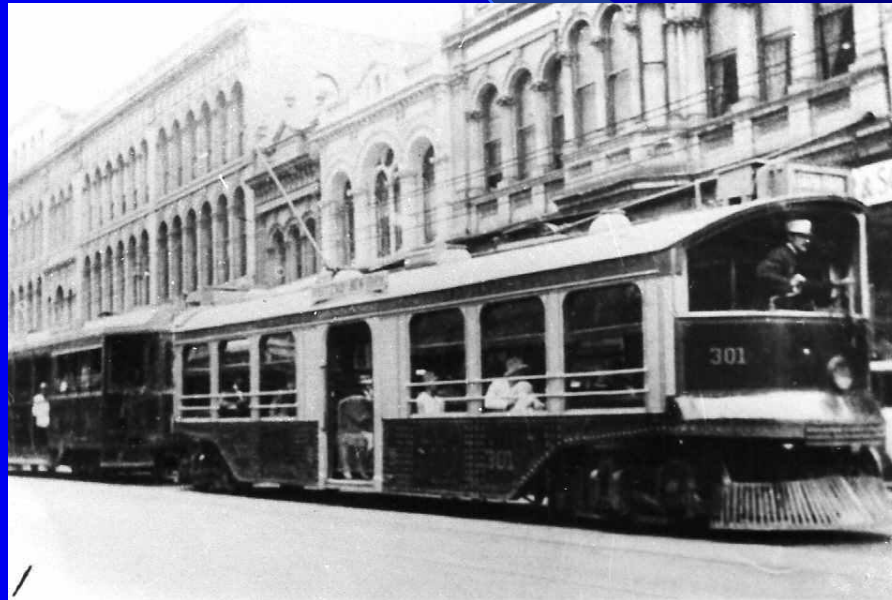
Round 1 – Question 4

*Which Sydney beach would I be going to if I saw
this colour in a tram's destination box?*



Round 1 – Question 5

Two Hedley-Doyle stepless trams operated in Australia. Did they operate on the same type of trucks?



Round 1 – Question 6

Who said;

“Whether you think that you can, or that you can't, you are usually right”?

Round 1 – Question 7

The Bendigo tramways had only one significant extension. Where was it between and when was it built?



MITCHELL STREET FROM CHARING CROSS, BENDIGO

Round 1 – Question 8

*Fred Allen, Neil McPhail, Alex Wyllie,
John Hart, Wayne Smith have all done
what?*

Round 1 – Question 9

The crossbench tram is synonymous with Sydney, but how many single truck crossbench electric trams (excluding trailers) have operated in Melbourne?

Round 1 – Question 10

Which Band has received an Australian of the Year Award?



Australian
of the Year
Awards

The background is a solid blue color. A thin, light blue curved line starts from the left edge and curves downwards towards the bottom right. A larger, semi-transparent blue triangular shape is positioned in the lower right quadrant, with its hypotenuse facing towards the top left.

End of Round 1

Answers to Round One

- Any tram ticket or a coin minted in 2002
- “Aunty”
- There was no Geelong No. 13
- Coogee Beach
- No – Brisbane had Brill 64E trucks / Perth Brill 62E trucks
- Henry Ford
- Violet St. & North Bendigo, 1942
- All have coached the All Blacks
- 14 – MMTB V Class 212-216 & VR 19-27
- The Seekers (1967)

The background is a solid blue color. A thin, light blue curved line starts from the top left and arcs towards the bottom right. A larger, semi-transparent blue shape, resembling a spotlight or a fan, originates from the center and extends towards the bottom right corner.

Round 2

Round 2 – Question 1

In which city is this tram operating?



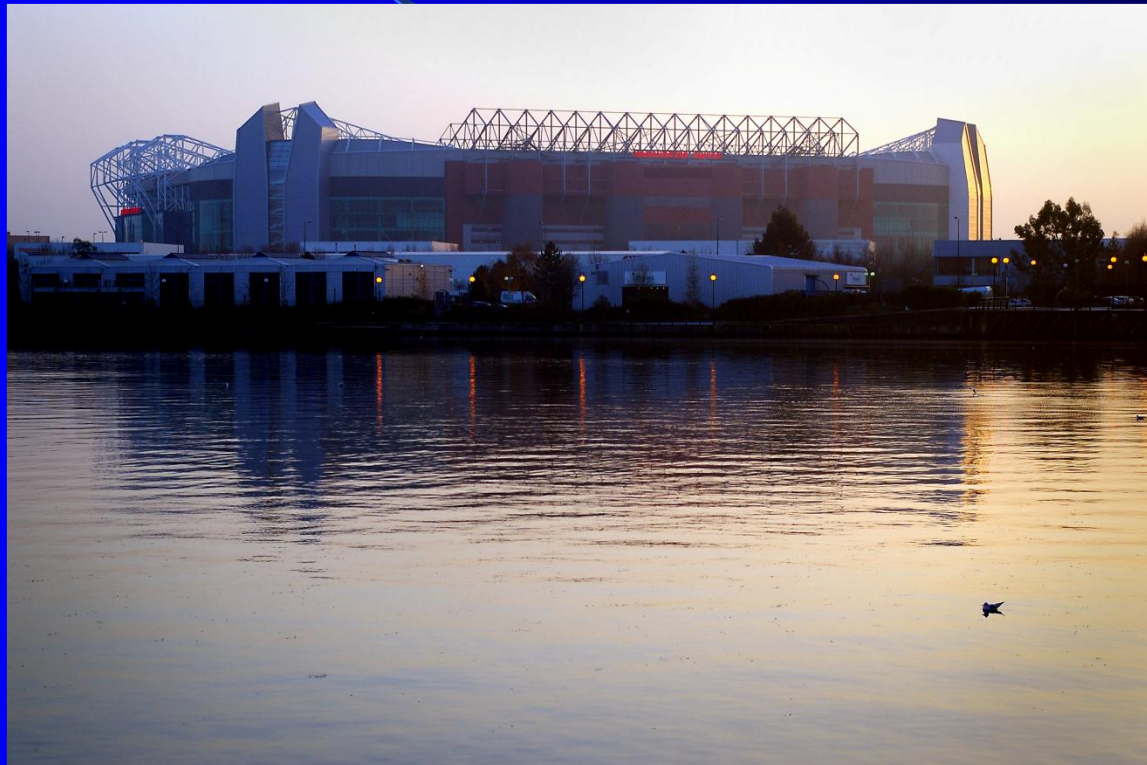
Hints:
Fleet No 947

Destination:
Camboslang

Sideboard;
St Vincent St +
Bothwell St +
Hope St

Round 2 – Question 2

In which English city is the Old Trafford football stadium?



Round 2 – Question 3

How many double deck electric trams operated in Australasia? Where did they operate?



Round 2 – Question 4

How many light rail vehicles operate on Sydney Metro Light Railway?



Round 2 – Question 5

In October 2007, a 1.2 kilometre extension of the Glenelg line was completed. What is the name of the new terminus of this line?

Round 2 – Question 6

This is the flag of which African nation?



Round 2 – Question 7

What were the fleet numbers of the last eight trams built for Brisbane during 1963?

Round 2 – Question 8

*Name the current editors of
'Trolleywire' magazine &
'Tramway Topics' magazine.*

Round 2 – Question 9

Which Australian city was the first to introduce a 'permanent' trolleybus system ?

Round 2 – Question 10

What was the name of the tramway station at the northern end of the Sydney Harbour Bridge?



The background is a solid blue color with a subtle gradient. A thin, light blue curved line starts from the left edge and curves downwards towards the bottom right. A larger, semi-transparent blue triangular shape is positioned in the lower right quadrant, pointing towards the center of the slide.

End of Round 2

Answers to Round 2

- Glasgow 947
- Old Trafford is in Manchester
- 99 - 2 in Sydney, 67 in Hobart, 6 in Auckland, 3 in Christchurch, 21 in Wellington.
- 6 - Sydney Light Rail 2101 –2106.
- The ‘new’ 2007 Adelaide terminus was at North Terrace
- This is the national flag of Botswana
- Brisbane ‘Phoenix’ trams 547 – 554
- Bob Merchant is the editor of ‘Trolleywire’ and Brent Efford is the editor of ‘Tramway Topics’.
- Perth had the first ‘permanent’ trolleybus installation (1933)
- Milson’s Point

The background is a solid blue color. A thin, light blue curved line starts from the top left and arcs towards the bottom right. A semi-transparent blue spotlight effect is centered on the text, with its brightest point directly behind the letters and fading out towards the bottom right corner.

Round 3

Round 3 – Question 1

- *Takapuna Tramway & Ferry Company steam tram trailers No. 1-14 were virtually identical to which Auckland Tramways class?*



Round 3 – Question 2

- *Who played Burt Munro, a New Zealand motorcycle enthusiast and one time record holder, in the movie "The World's Fastest Indian"?*



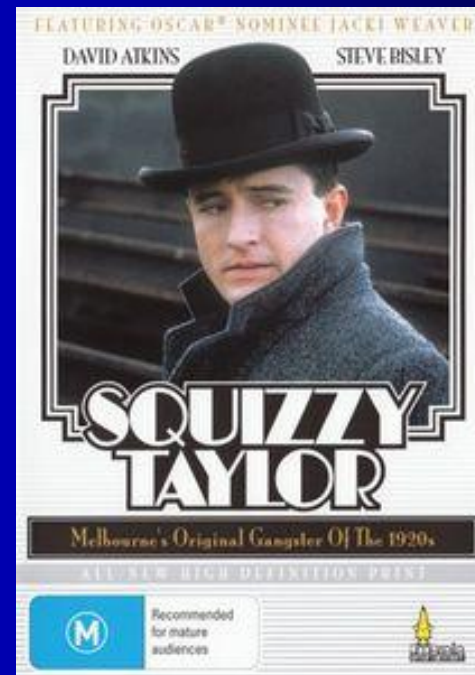
Round 3 – Question 3

- *How many Australasian tramways used Pram Hooks on their electric trams?*



Round 3 – Question 4

- *What was the class and fleet numbers of the two trams repainted MMTB Chocolate & Cream for the 1982 Australian movie “Squizzy Taylor”?*



Round 3 – Question 5

- *When and where was the last tramway extension in Perth?*



Round 3 – Question 6

- *What percentage of NZ police are constables?*
- 95%
- 75%
- 45%
- 20%

Round 3 – Question 7

- What three prominent structures have been built successively on Bennelong Point?



Round 3 – Question 8

- *How many places in Australia did one tramway cross over another with grade separation?*



THE ROSE SERIES P. 8642
COPYRIGHT

BRADFIELD HIGHWAY LOOKING TOWARDS CITY, TAKEN FROM
PYLON LOOKOUT, SYDNEY HARBOUR BRIDGE, N.S.W.

Round 3 – Question 9

- *Which Australian promised to “Go all the way with LBJ” ?*



Round 3 – Question 10

- *What feature did the Sydney O Class, the Melbourne O Class, the Brisbane 'Bogie Centre Aisle' Class, the Auckland L Class and the Perth I Class all have in common?*

The background is a solid blue gradient. A thin, light blue curved line starts from the top left and arcs towards the bottom right. A larger, semi-transparent blue shape, resembling a sector of a circle, is positioned in the lower right quadrant, partially overlapping the main blue background.

End of Round 3

Answers to Round 3

- Auckland L Class
- Anthony Hopkins
- 6 Perth, Fremantle, Kalgoorlie, Christchurch, Dunedin, Invercargill
- L Class 104 & 106
- 1943, Salisbury St to Grand Prom – Inglewood route.
- 75%
- Fort Macquarie, Fort Macquarie Depot & the Sydney Opera House.
- 6. Sydney at Eddy Ave (2 locations) & Harbour Bridge (the highest). Melbourne after Nov 1987 at Albert Rd, Albert Park & Park St Albert Park
- PM Harold Holt
- All were nicknamed ‘Dreadnoughts’.

The background is a solid blue color. A thin, light blue curved line starts from the left edge and curves downwards towards the bottom right. A larger, semi-transparent blue shape, resembling a spotlight or a fan, originates from the same curved line and extends towards the bottom right corner, creating a gradient effect from the background blue to a lighter blue.

Round 4

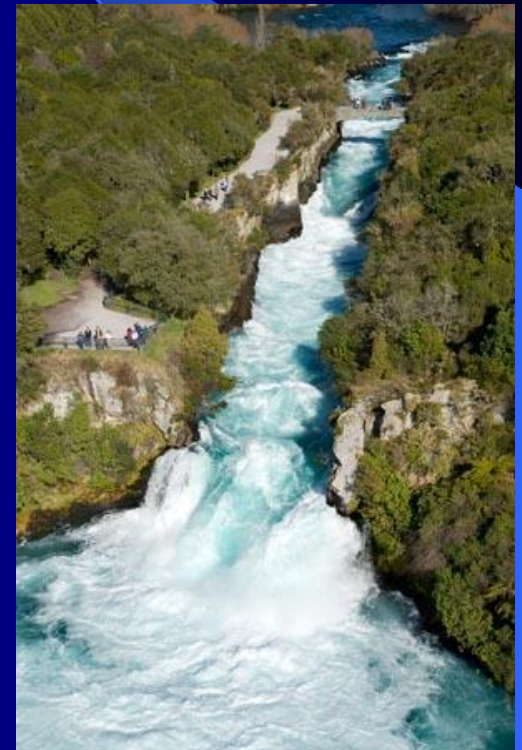
Round 4 – Question 1

- What was the fleet number of the last street tram when the Adelaide system closed on the 22 November 1958?



Round 4 – Question 2

- *List these New Zealand rivers according to length from longest to shortest.*
- *Rangitikei*
- *Waikato*
- *Wanganui*
- *Clutha*
- *Waiau*



Round 4 – Question 3

- *What is the capital of Malta?*



Round 4 – Question 4

- What chassis does Trolleybus 216, The ‘Green Goddess’ have?



Round 4 – Question 5

- *Which Australian State is this the floral emblem of?*



Round 4 – Question 6

- *How many Australasian tramways operated with twin overhead wires?*

Round 4 – Question 7

- *Which is taller;*
- *Sydney Tower or Sky Tower in Auckland?*



Round 4 – Question 8

- *There were 626 Sydney O Class trams built, the majority of which were capable of multiple unit operation. How many non-coupling (direct control) O Class were built?*



Round 4 – Question 9

- *The Tamar River flows through which Australian city?*

Round 4 – Question 10

- *COTMA 2014 will be held in which city?*

The image features the text "End of Quiz" in a bold, 3D, orange-to-yellow gradient font. The text is slanted upwards from left to right. A bright blue spotlight beam originates from the bottom right and illuminates the text. The background is a dark blue gradient with a thin, light blue curved line passing behind the text.

End of Quiz

Answers to Round 4

- F1 269
- 1. Waikato 2. Clutha 3. Wanganui 4. Rangitikei 5. Waiau
- Valetta
- South Australia
- Garford
- 2 – Saywell's Rockdale tramway & Leonora
- Sky Tower 328m / Sydney Tower 309m
- 51 DC O Class
- Launceston
- Sydney