

Exploring Adelaide's tramline extensions

Manuel Delgado

Director, Strategic Projects



Government of South Australia

Department of Planning,
Transport and Infrastructure

Presentation will cover...

TRAMLINE EXTENSIONS

- Why we did it
- What we did
- How we did it
- What has been achieved



ADELAIDE'S RICH HISTORY WITH TRAMS

It's worth a quick look...



Horse Power - Grenfell Street c1890



Trams going electric - King William Road c1909



Adelaide's tram, rail and trolleybus network up to 1958

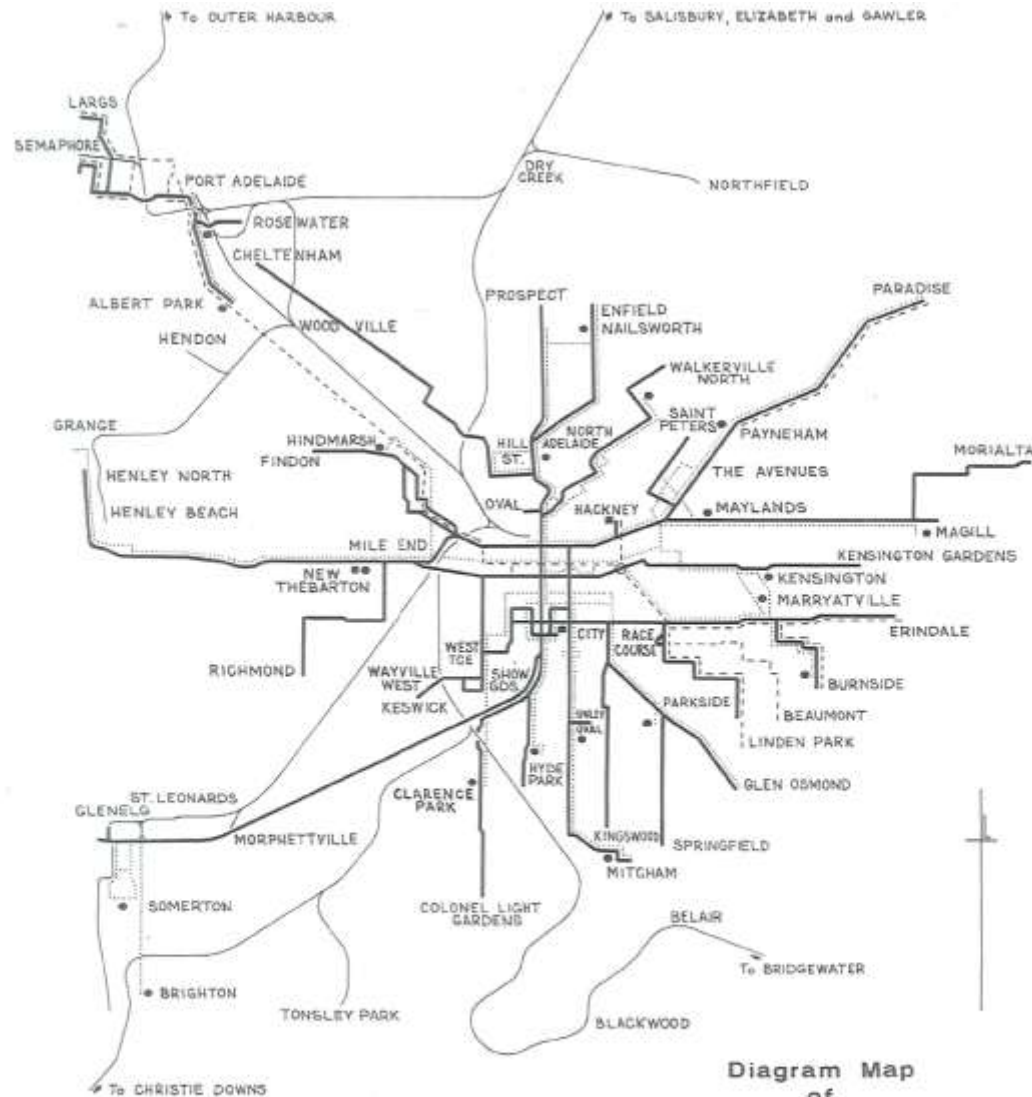


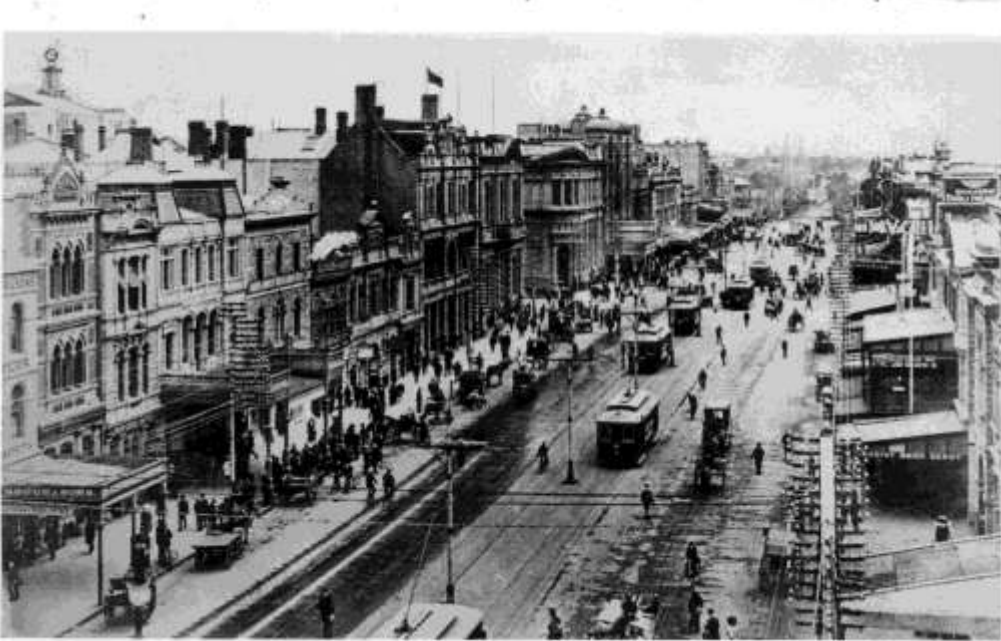
Diagram Map
of
ADELAIDE

Showing railways, horse tramways
electric tramways and trolleybus lines
at their maximum development.

REFERENCE

RAILWAYS	Depots
HORSE TRAMWAYS	Depots
ELECTRIC TRAMWAYS	Depots
TROLLEYBUS LINES	Depots

Peak hour - King William Street



C 1910



C 1930

Trams in the suburbs



Norwood Parade



Henley Beach

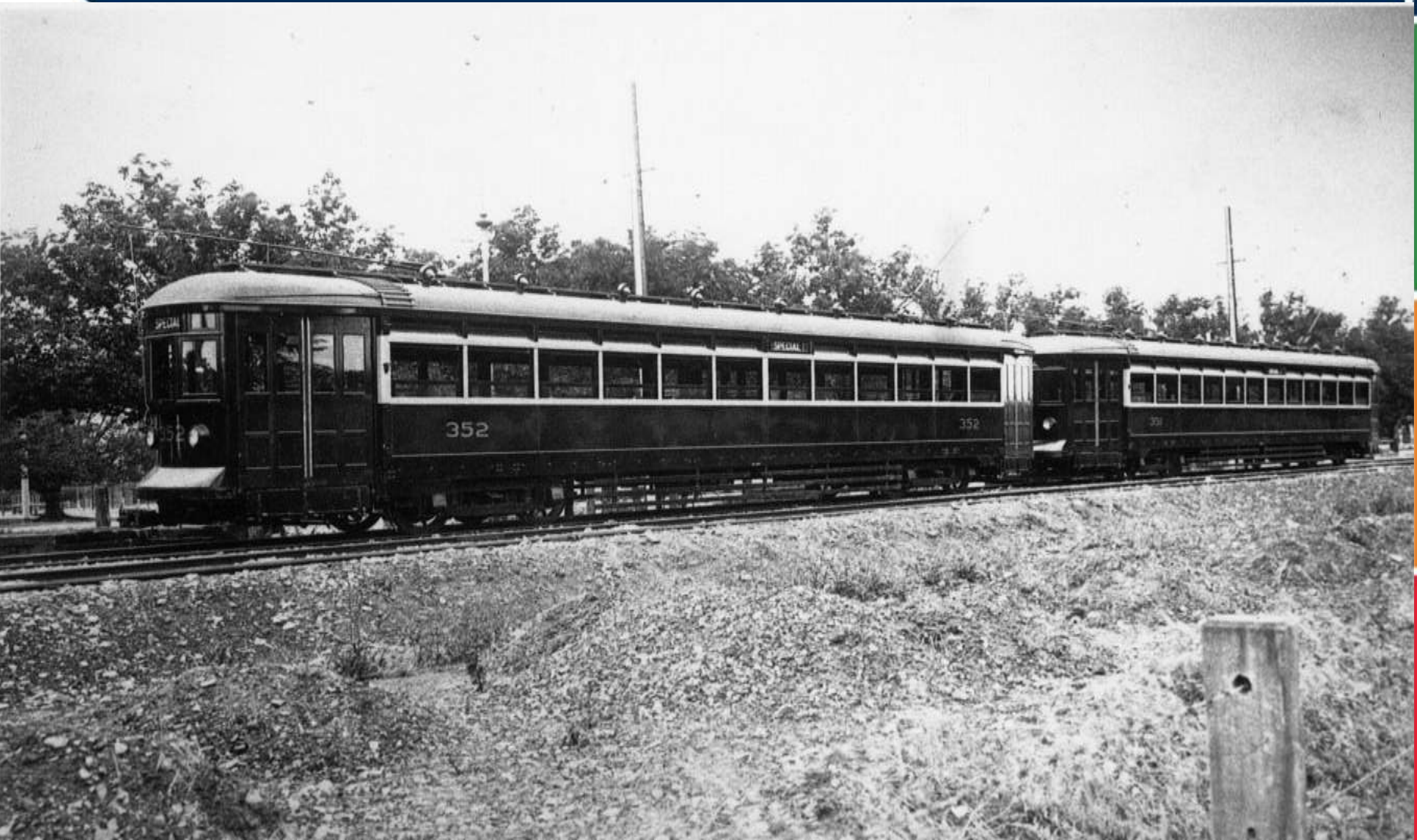
George Street, Parkside c1954



Trams were popular...



Glenelg service - own corridor & 'modern fleet'



Trams terminated at Victoria Square



“Trams to return to the heart of Adelaide”

Premier, 2005

To provide:

- Better integration of public transport network
- Better environmental benefits
- Better traffic management



Not everybody thought it was a good idea

'Hallucination'

Ludicrous idea

Traffic nightmare

Recipe for disaster

Here's where to spend the \$21m

**City tram
line plan
is 'crazy'**

On wrong track

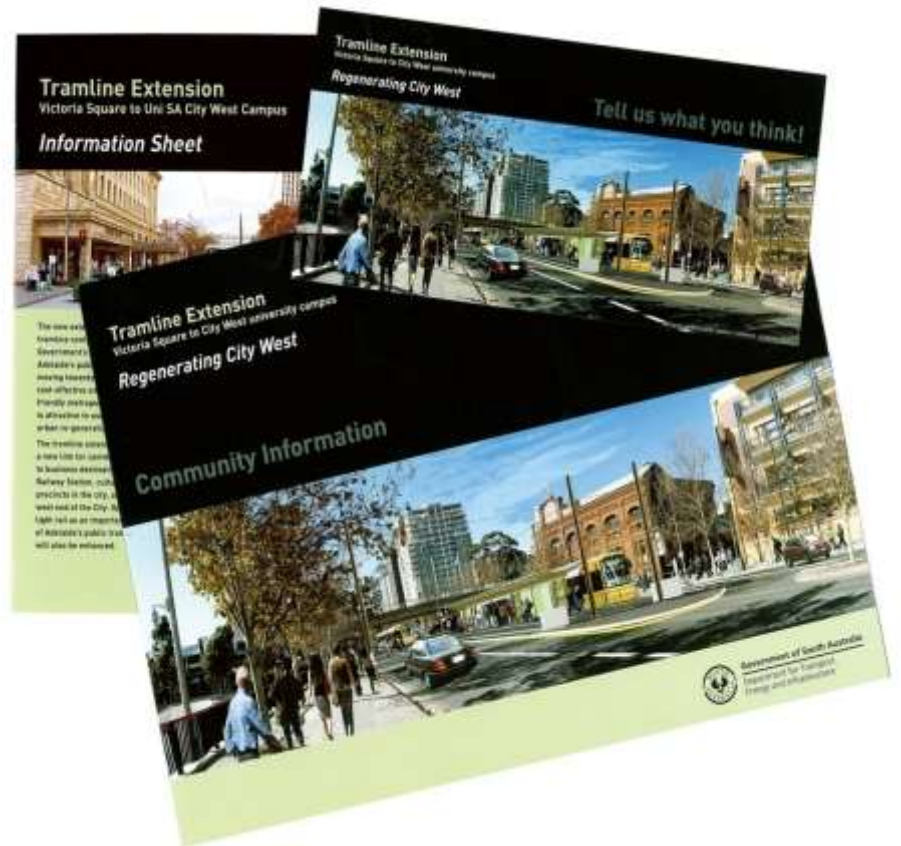
Tramlines an eyesore

Tram: You say no

\$21m can be better spent elsewhere – readers

tralia

Community Engagement



What we delivered



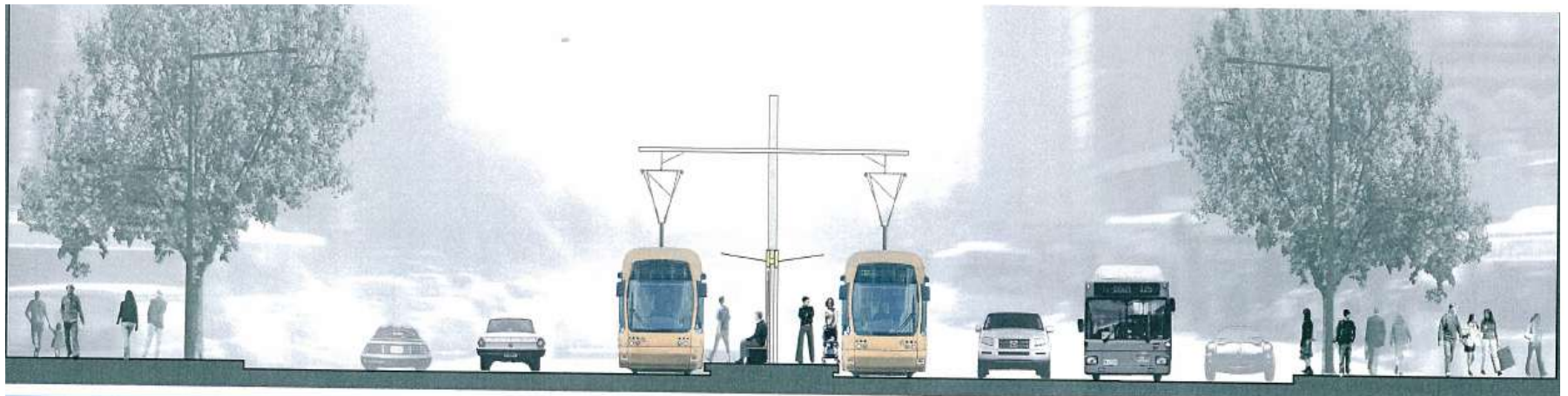
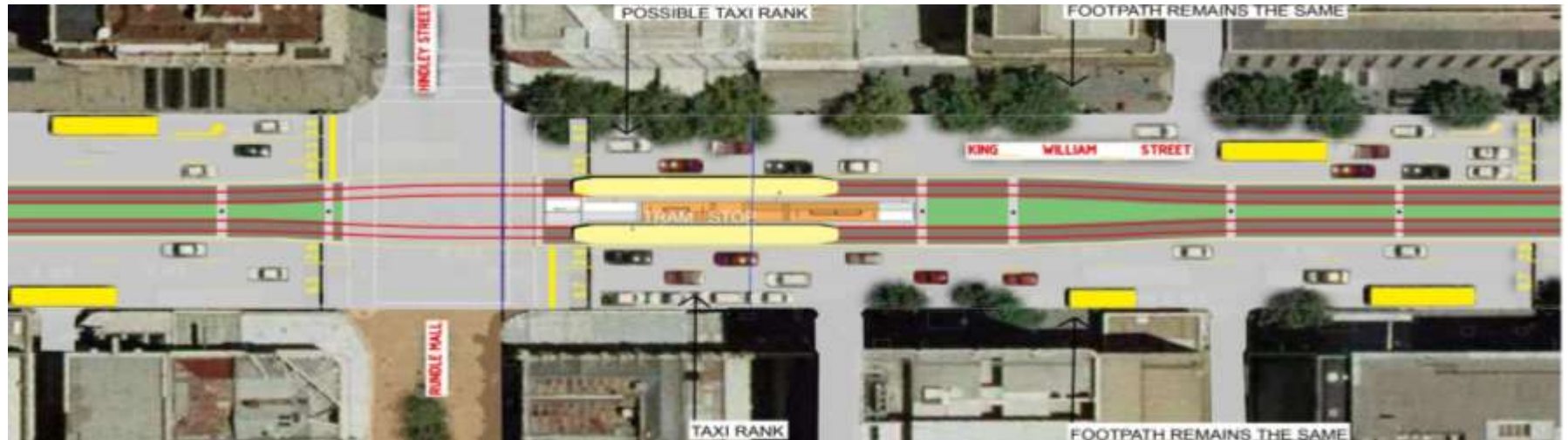
Victoria Square terminus - falling short of the heart of the CBD



Tram route to City West



Tram corridor



How we did it



11/05/2007 16:03

07 14:46

Six major stages of construction

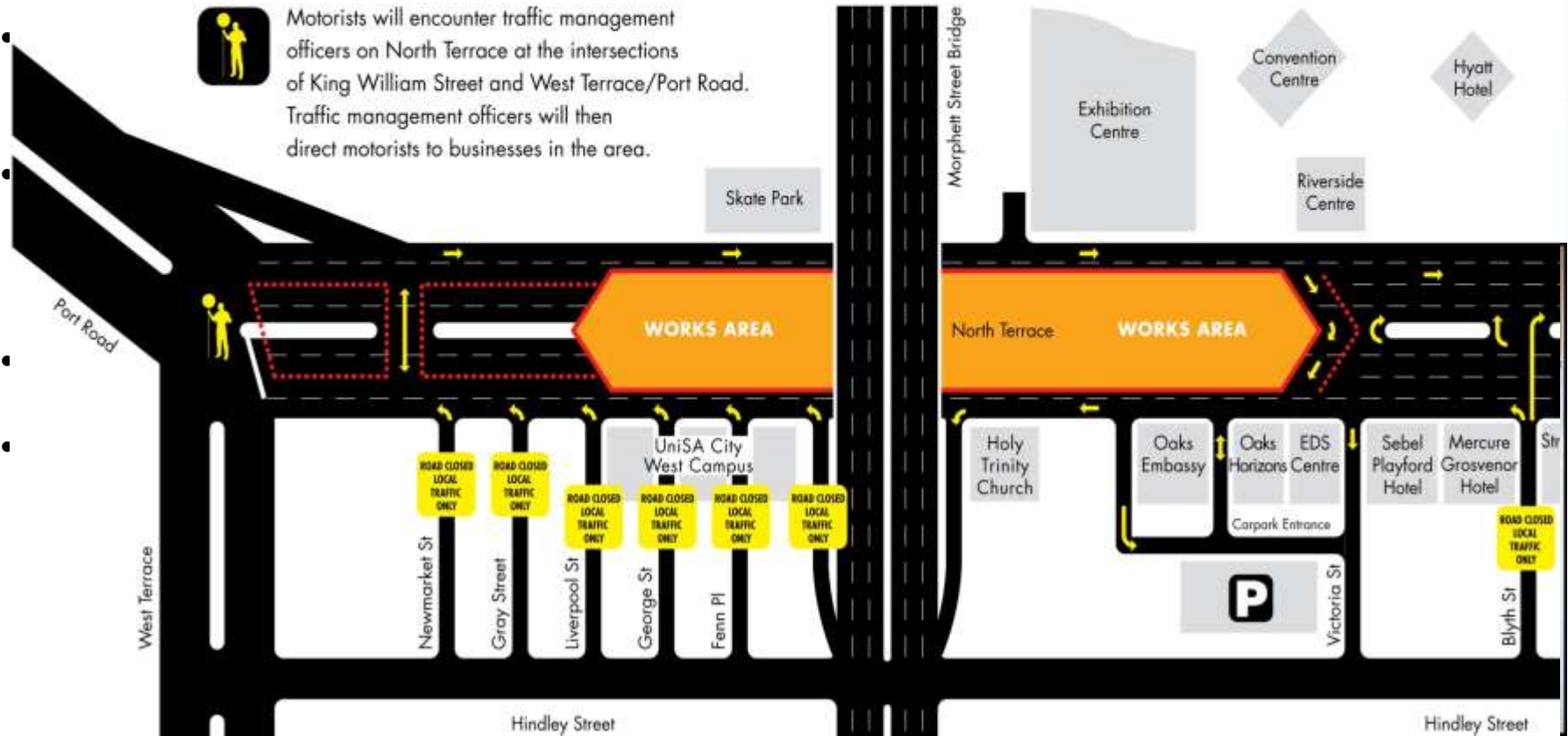
Tramline Extension

Major Construction Stage 1

Friday April 6 - Monday April 9 2007



Motorists will encounter traffic management officers on North Terrace at the intersections of King William Street and West Terrace/Port Road. Traffic management officers will then direct motorists to businesses in the area.





Excavating North Terrace for tram tracks near Morphet Street looking East, 7 April 2007



**Excavating North Terrace for City West stop near
Morphett Street looking West, 7 April 2007**



• Installing electrical conduits on North Terrace near
Morphett Street bridge looking East, 7 April 2007



The first tram track is laid on North Terrace near Holy Trinity Church, 7 April 2007



Tracks being laid in North Terrace
(near Morphett Street) looking east
8 April 2007



Boxing up the central median on North Terrace near Victoria Street looking west, 8 April 2007



Major track and concrete works on North Terrace near Morphett Street looking east, 8 April 2007

Working with our stakeholders...



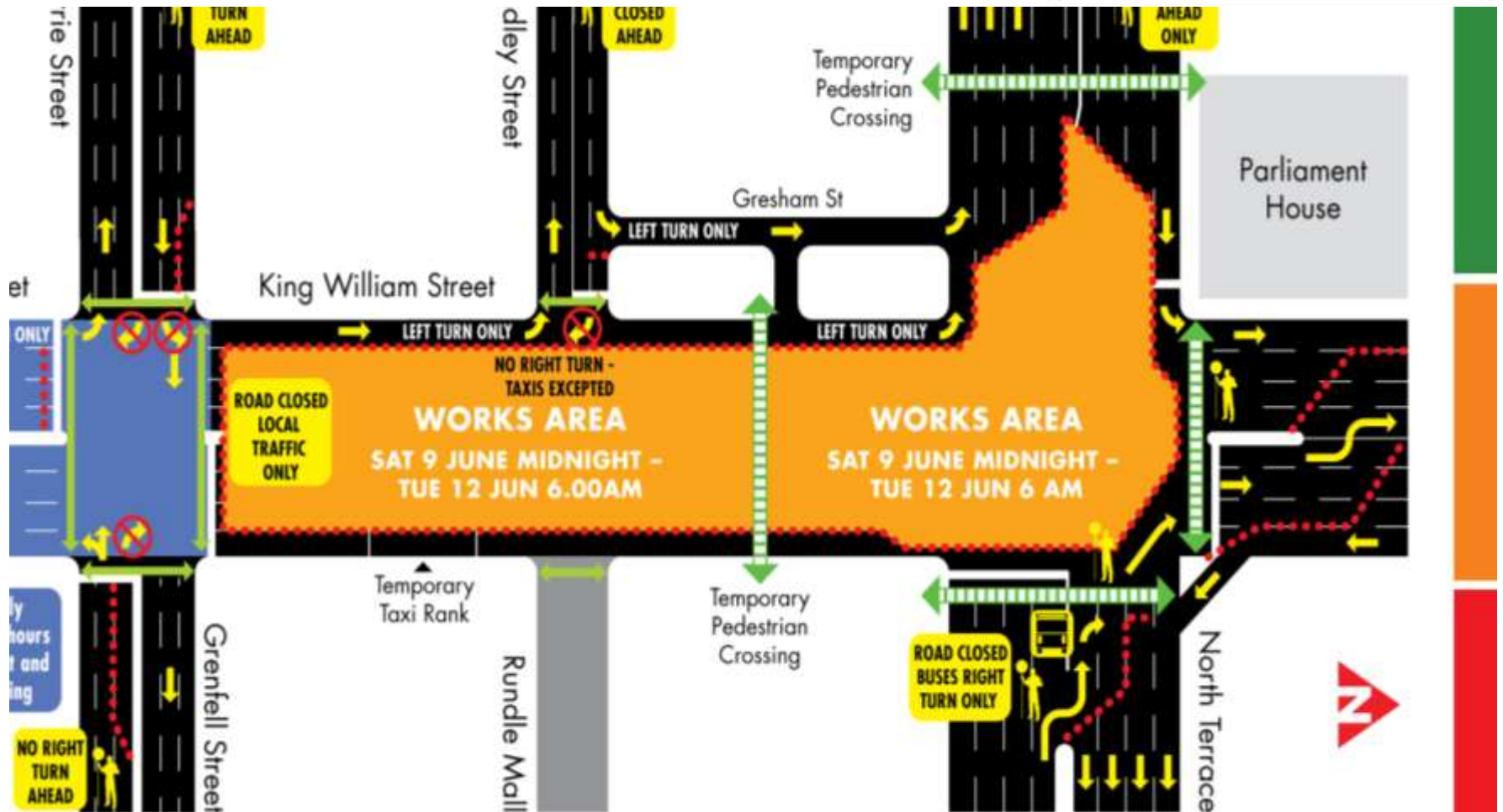
Stage 4 - we have been here before!!

Major Construction Stage 4

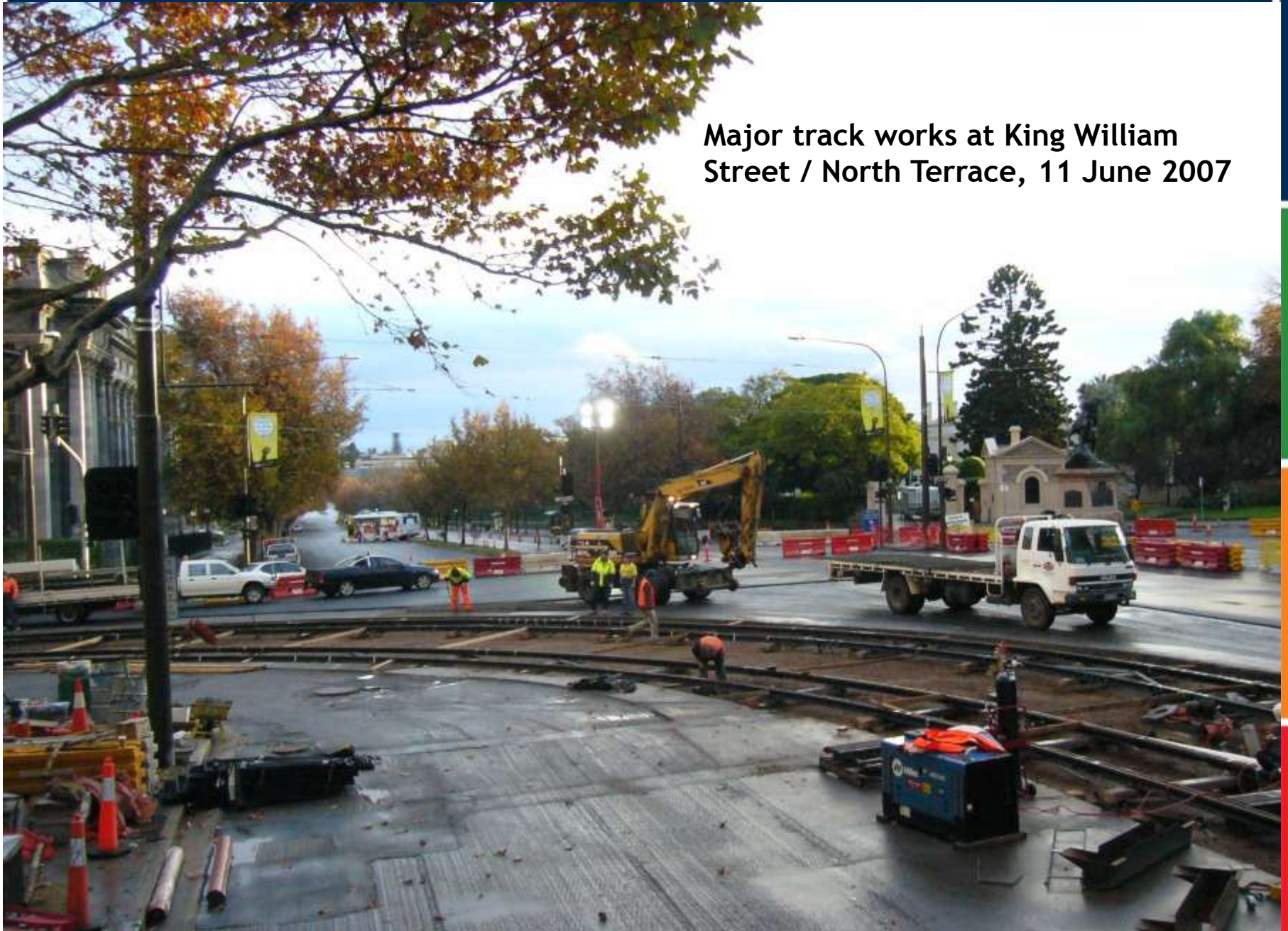
FRI 8 JUNE 10PM - TUESDAY 12 JUNE 6AM



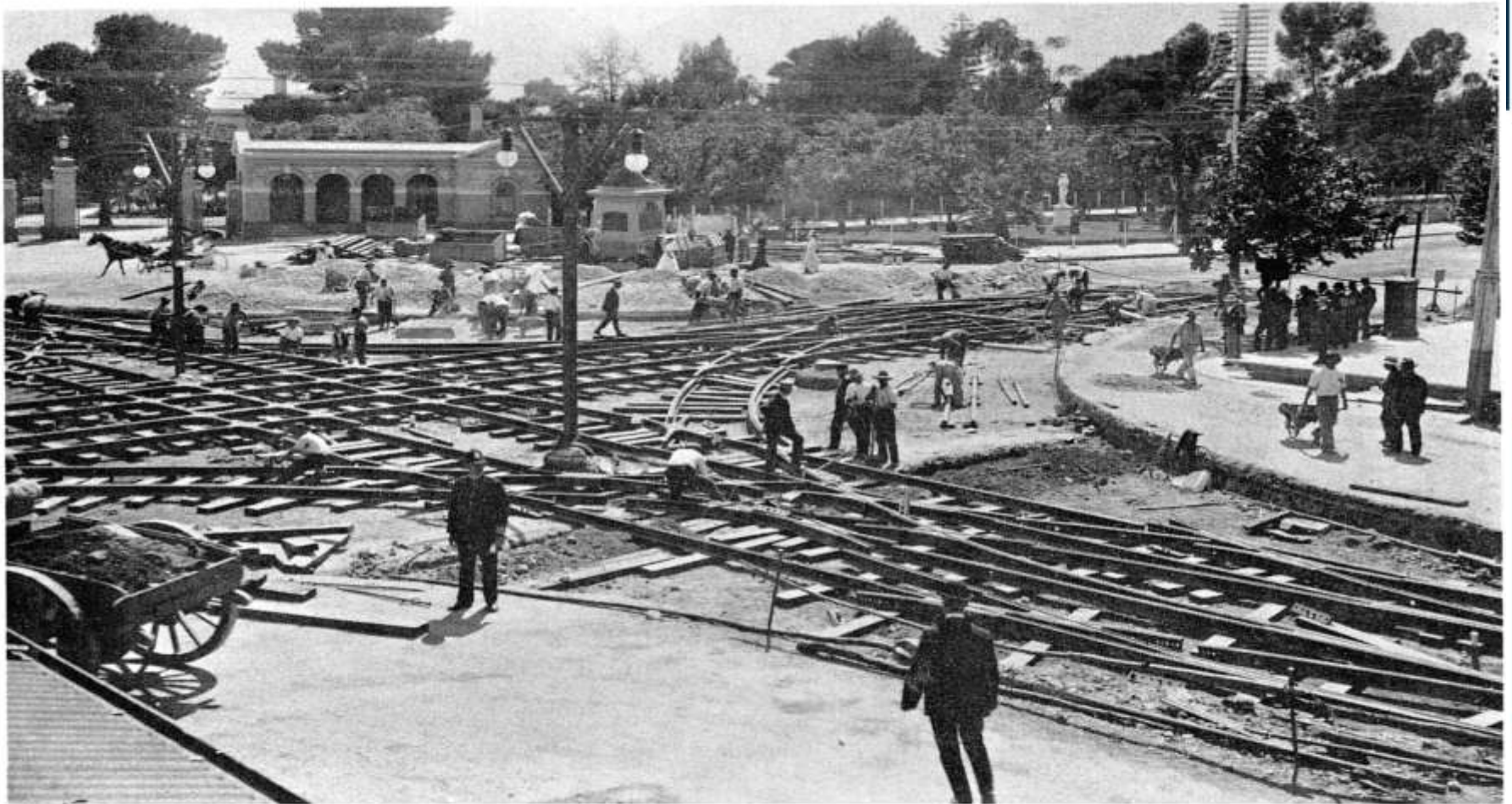
Motorists will encounter traffic management officers surrounding the work area. These officers will divert all traffic (without a direct need to access King William Street) away from the work area.



**Major track works at King William
Street / North Terrace, 11 June 2007**



100 years earlier...



XIV Installing the "grand union" track junction at the intersection of King William Street and North Terrace in 1908

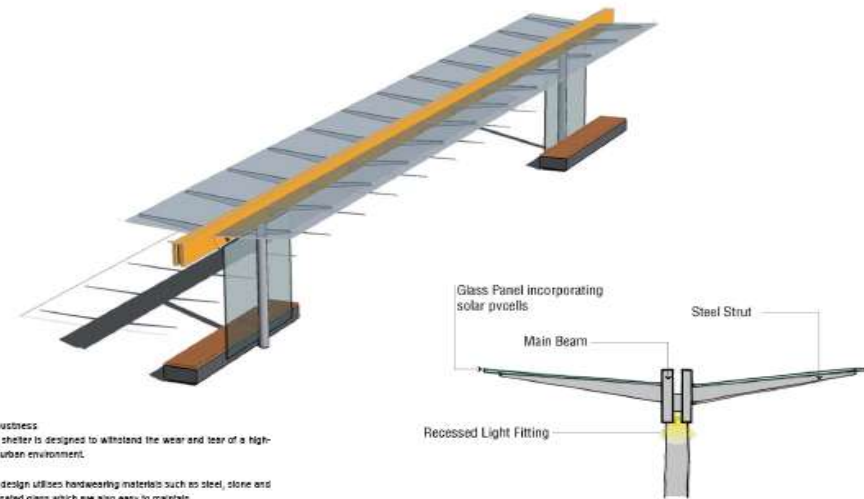
What has been achieved



Successful integration



Tram Shelters

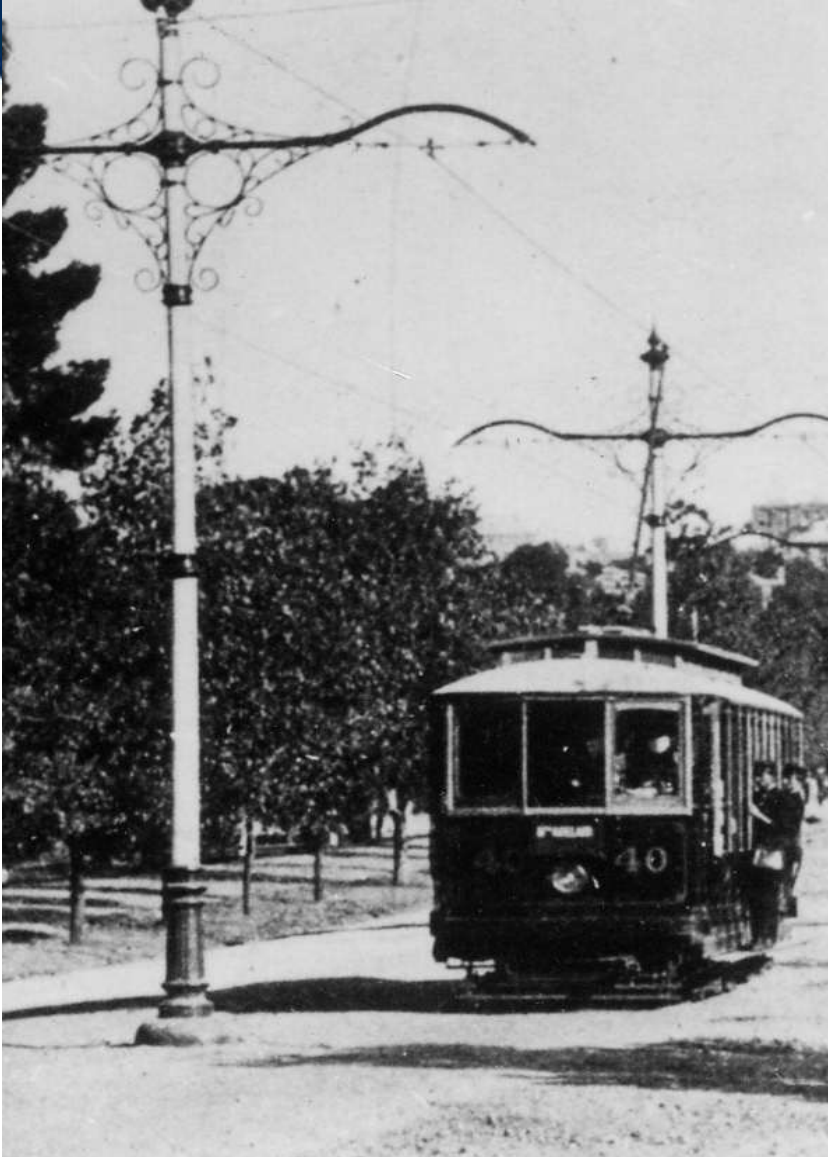


Robustness
The shelter is designed to withstand the wear and tear of a high-use urban environment.

The design utilises hardwearing materials such as steel, stone and laminated glass which are also easy to maintain.



Poles and wires



“Grass Tracks” - Victoria Square



Adding life and vibrancy to the city



What other people said

I was wrong

**Build the tram,
and don't stop**

**TRAMS JUST
TOO POPULAR**

MOST SIGNIFICANT CITY PROJECT IN DECADES

TRAMLINE EXTENSION TO THE ENTERTAINMENT CENTRE



Where is the extension going?



Key Issues

- Park Lands
- Traffic
- Bridges
- Heritage



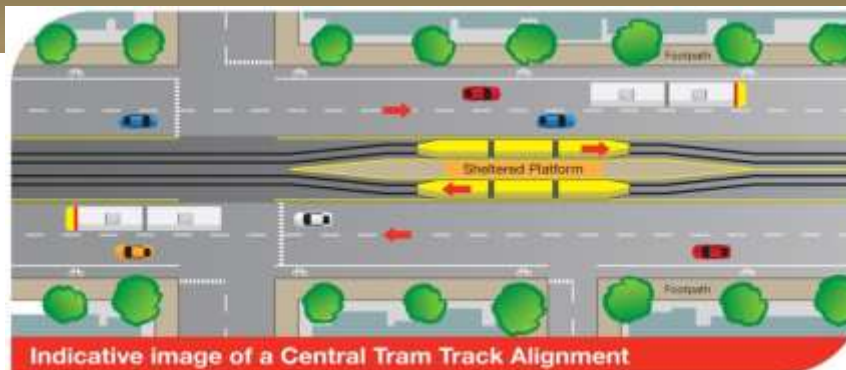
Integration with other projects - new RAH



Integration with other projects - AEC



Central Track Alignment



Government of South Australia
Department for Transport,
Energy and Infrastructure

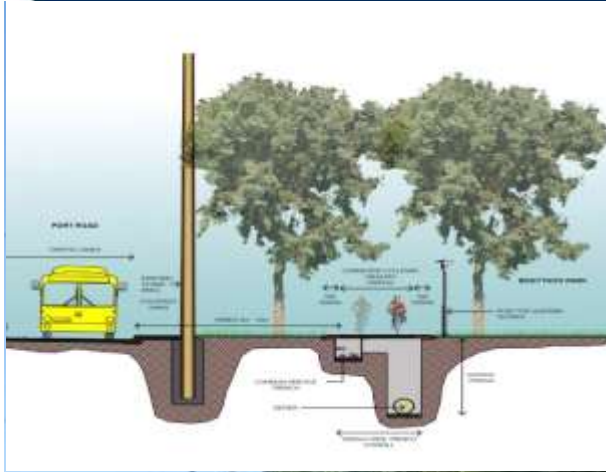
Park and Ride



Emphasis on good urban design outcomes



Emphasis on good urban design outcomes



Community Engagement



Summing Up...





Thank You



Government of South Australia

Department of Planning,
Transport and Infrastructure