



COTMA CONFERENCE

Wellington

2010

Colin Zeff

AUCKLAND WATERFRONT TRAMWAY

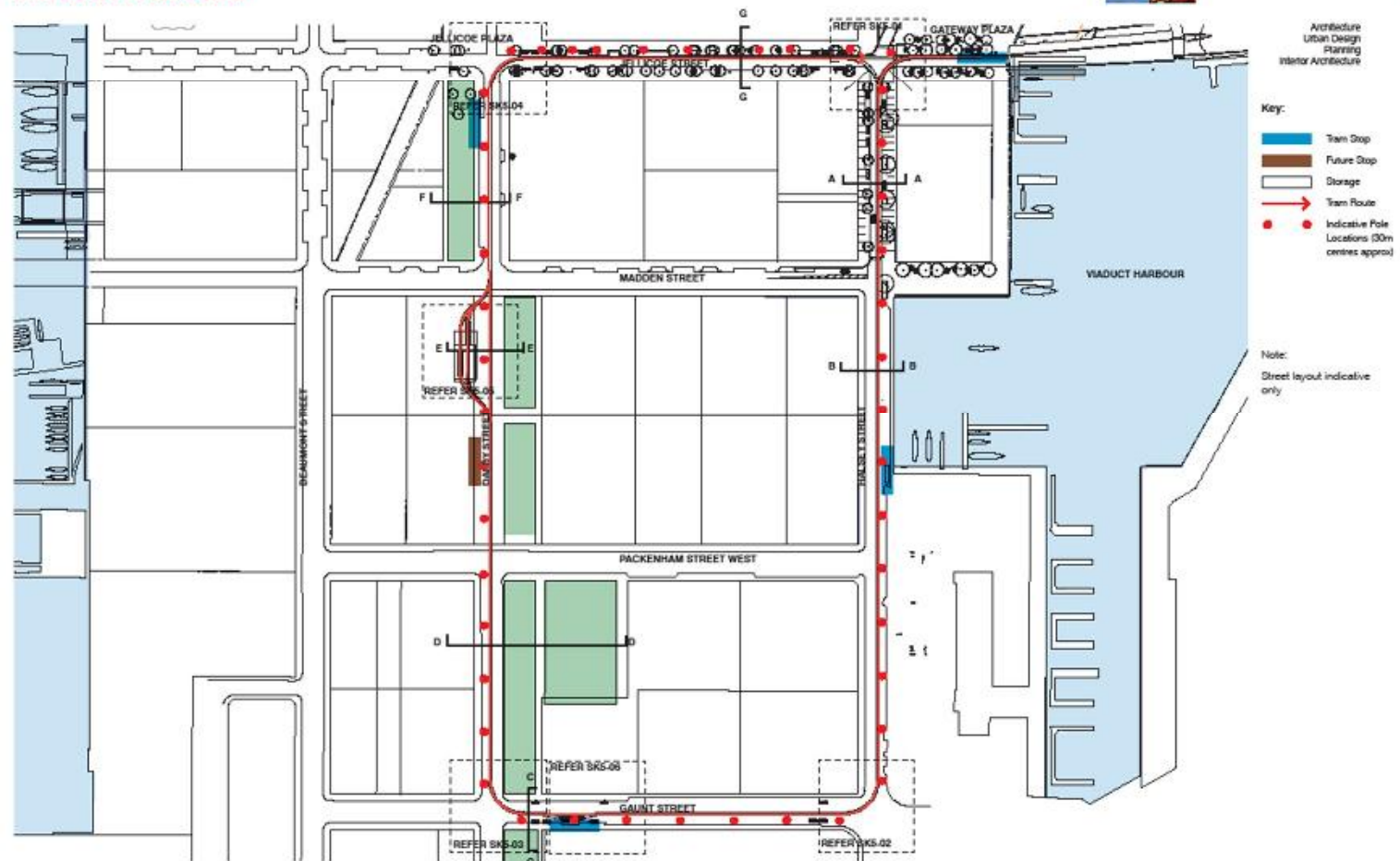


ORIGINAL ROUTE



PROPOSED ROUTE

DRAFT FOR DISCUSSION



Wynyard Quarter: Heritage Tram

July 2010

Prepared for Sea + City Projects Ltd

Drawing: Tram Route

1:2000@A3

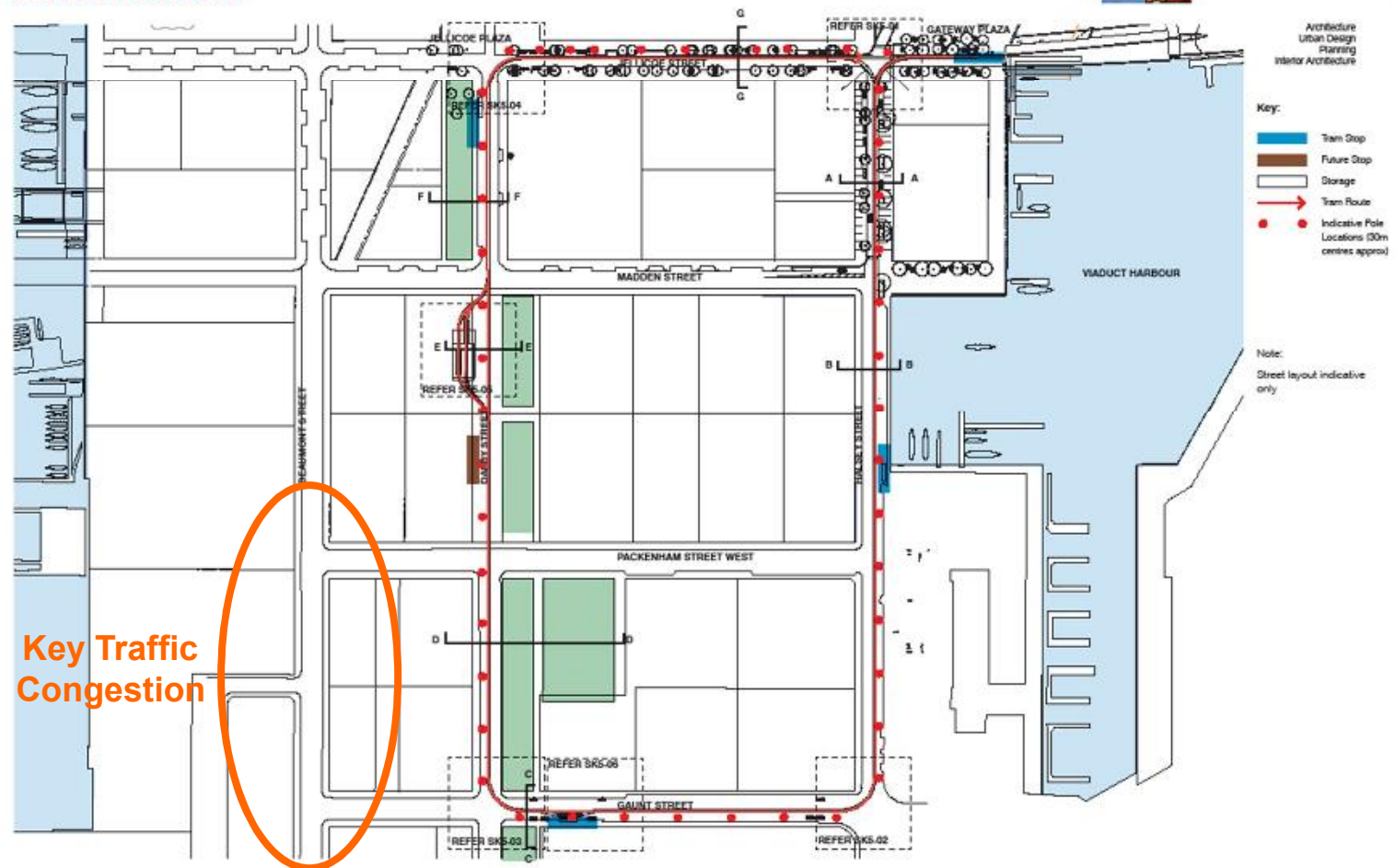
Job No 1022

Drawing no: SK1-02 Rev. A



PROPOSED ROUTE

DRAFT FOR DISCUSSION



Key Traffic Congestion

Wynyard Quarter: Heritage Tram

July 2010

Prepared for Sea + City Projects Ltd

Drawing: Tram Route

1:2000@A3

Job No 1022

Drawing no: SK1-02 Rev. A

DRAFT FOR DISCUSSION



July 2010

Prepared for Sea + City Projects Ltd

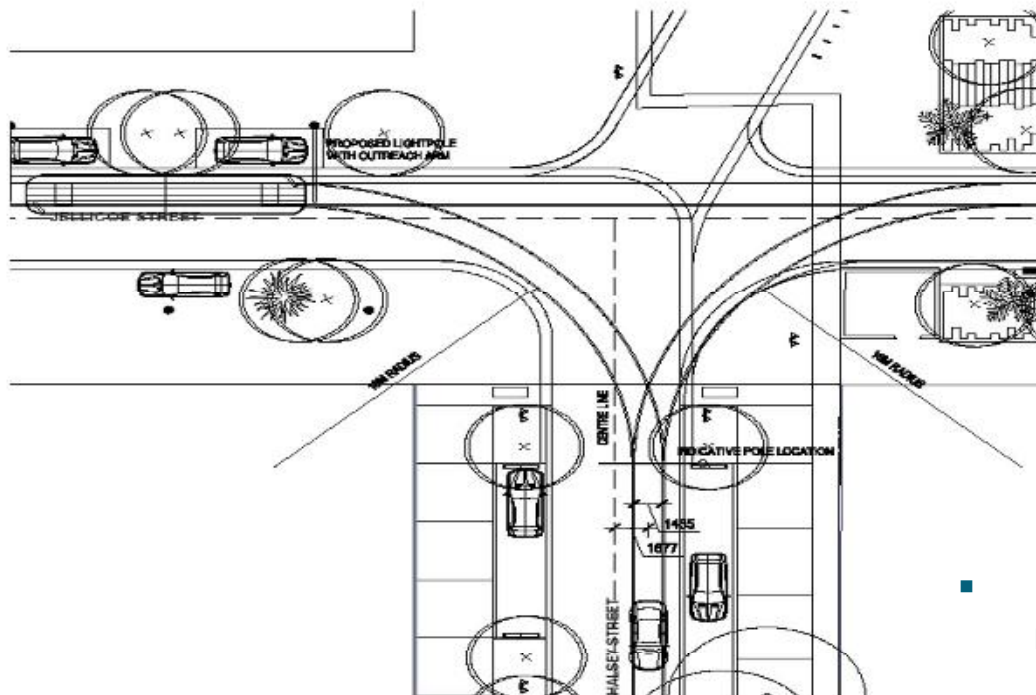
Drawing: Tram Route

1:2000@A3

Job No 1022

Drawing no: SK1-02 Rev. A

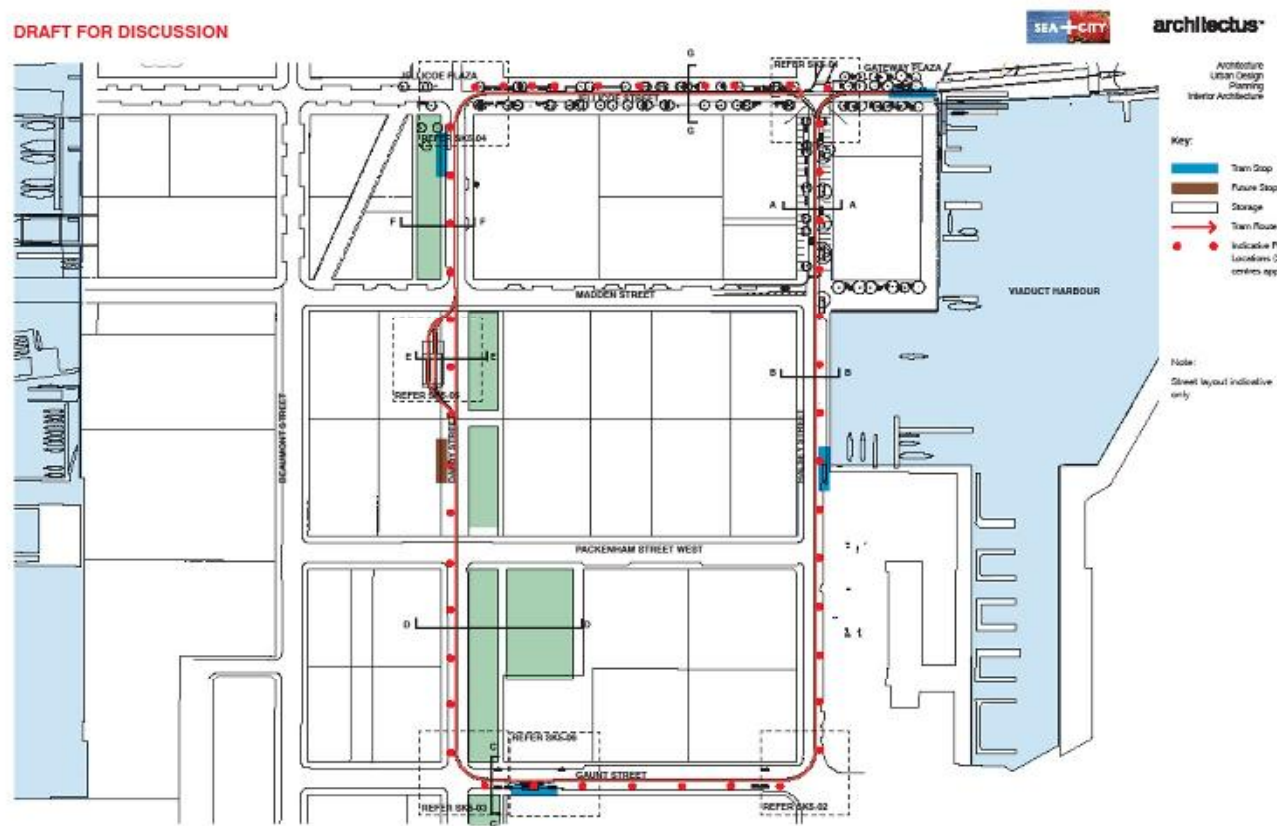
CORNER



- Heritage trams have a minimum 18m radius

TRAMS STOPS

DRAFT FOR DISCUSSION



Wynyard Quarter: Heritage Tram

July 2010

Prepared for Sea + City Projects Ltd

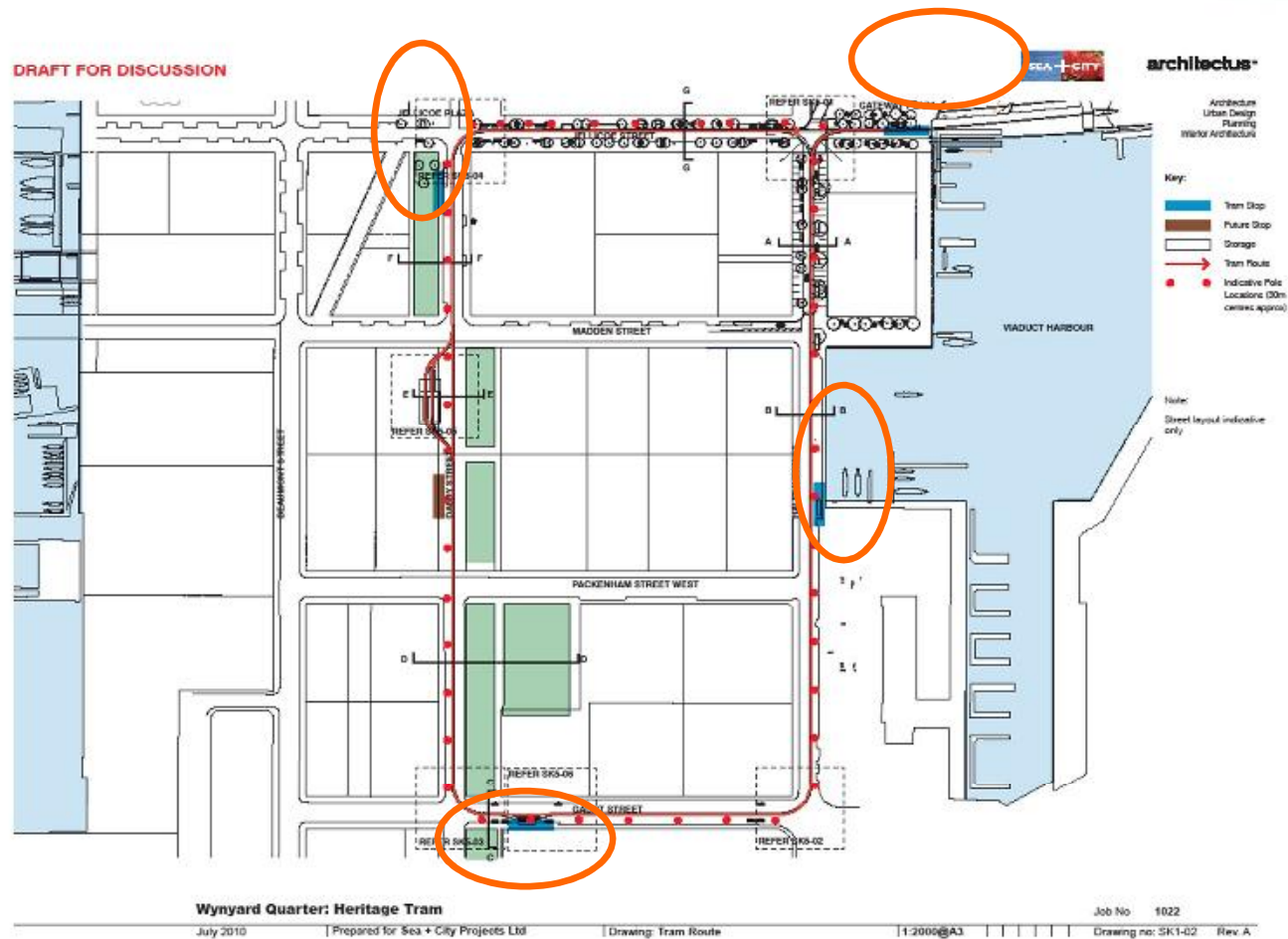
Drawing: Tram Route

1:2000@A3

Job No 1022

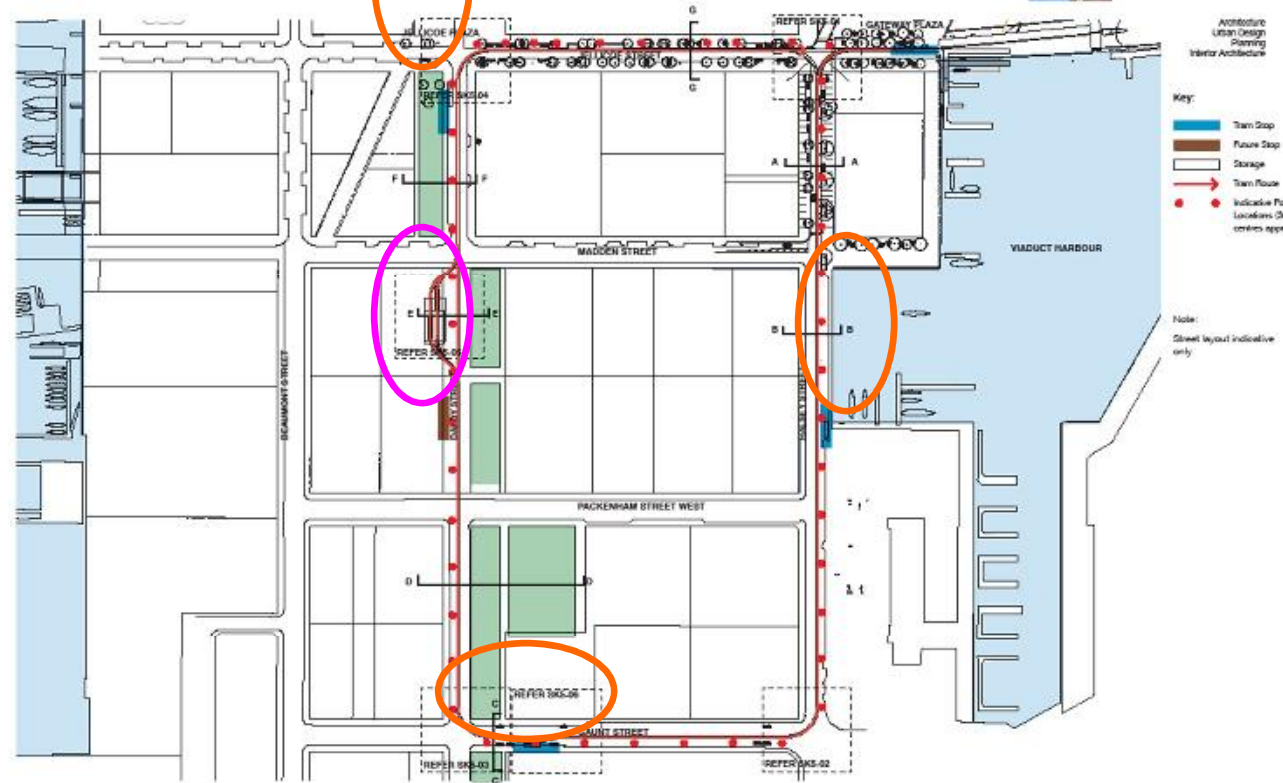
Drawing no: SK1-02 Rev. A

TRAMS STOPS



TRAMS STOPS

DRAFT FOR DISCUSSION



Wynyard Quarter: Heritage Tram

July 2010

Prepared for Sea + City Projects Ltd

Drawing: Tram Route

1:2000@A3

Job No 1022

Drawing no: SK1-02 Rev. A



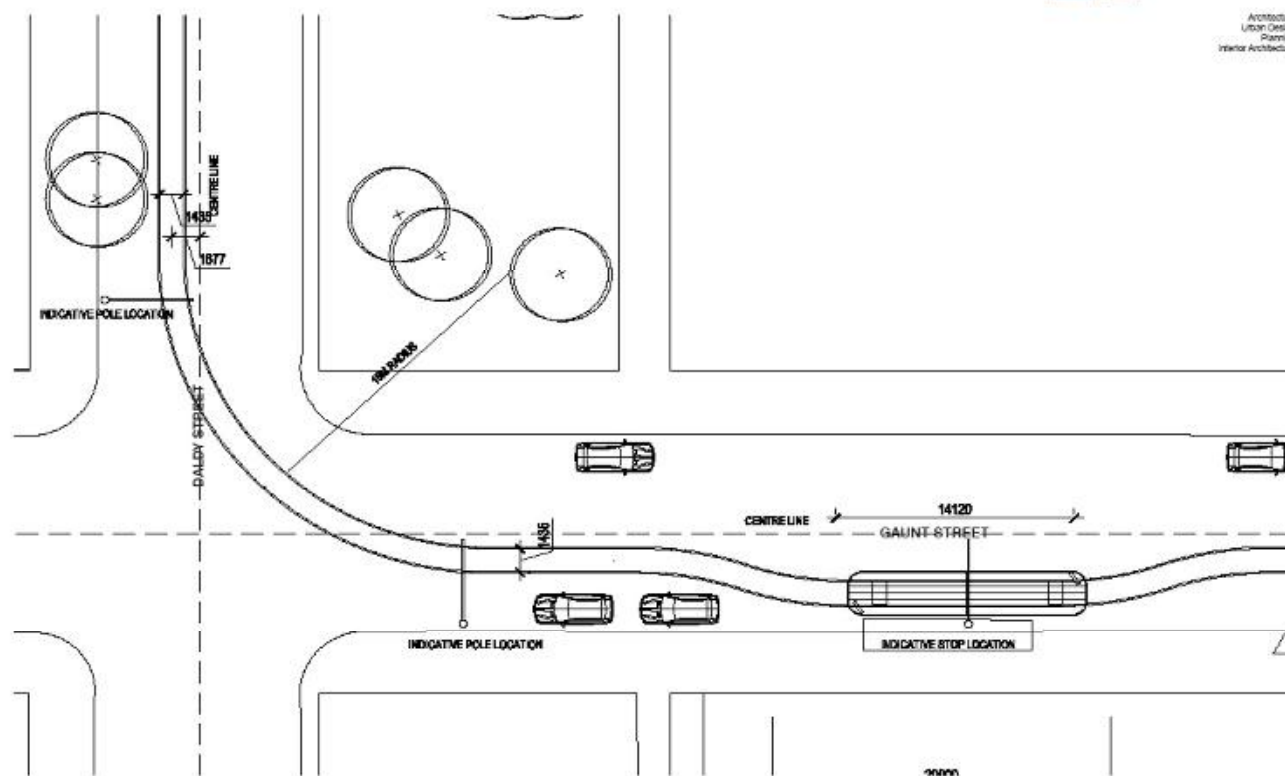
TRAMS STOPS

DRAFT FOR DISCUSSION



architectus

Architecture
Urban Design
Planning
Interior Architecture



Wynyard Quarter: Heritage Tram

Job No 1022

July 2010

Prepared for: Sea + City Projects Ltd

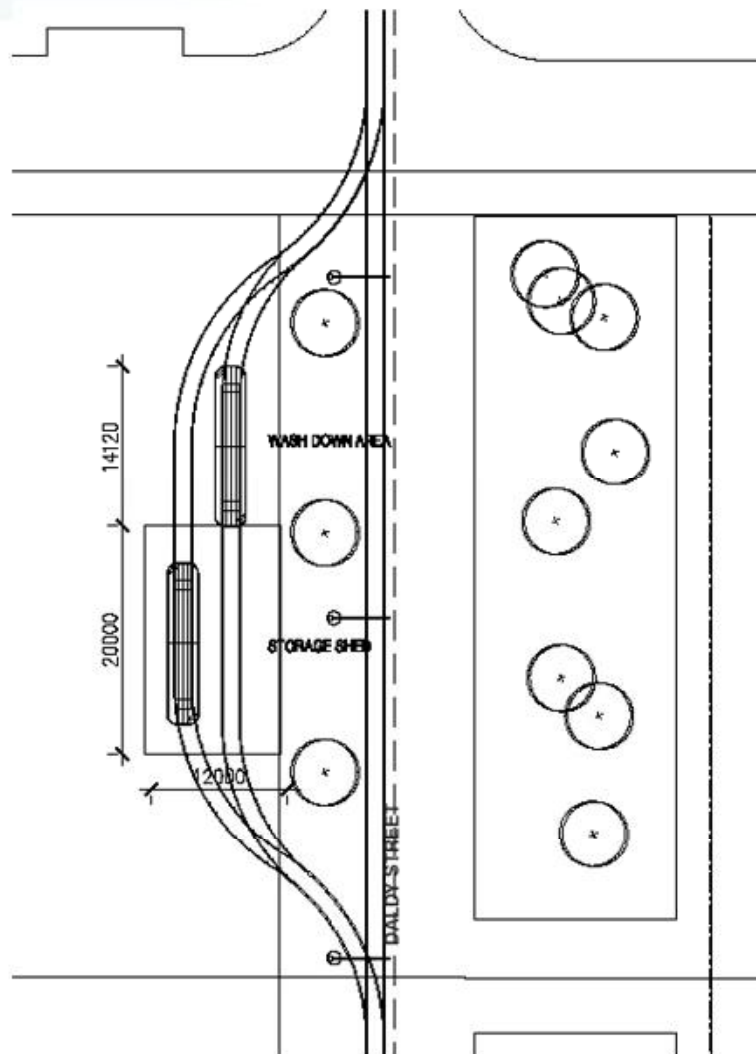
Drawing: Gaunt / Daldy Intersection

1:200@A3

Drawing no: SK5-03 Rev. A



TRAMCAR HOUSING



- Approx 20m x 12m x 8m high building
- Located on western site of Daldy St to:
 - minimise track and overhead wires
 - allow a longer tenure than Sites 12 or 13.
- Still allows public accessibility
- Considering reuse of part of Team NZ building.

TRAMCARS



Currently Progressing:

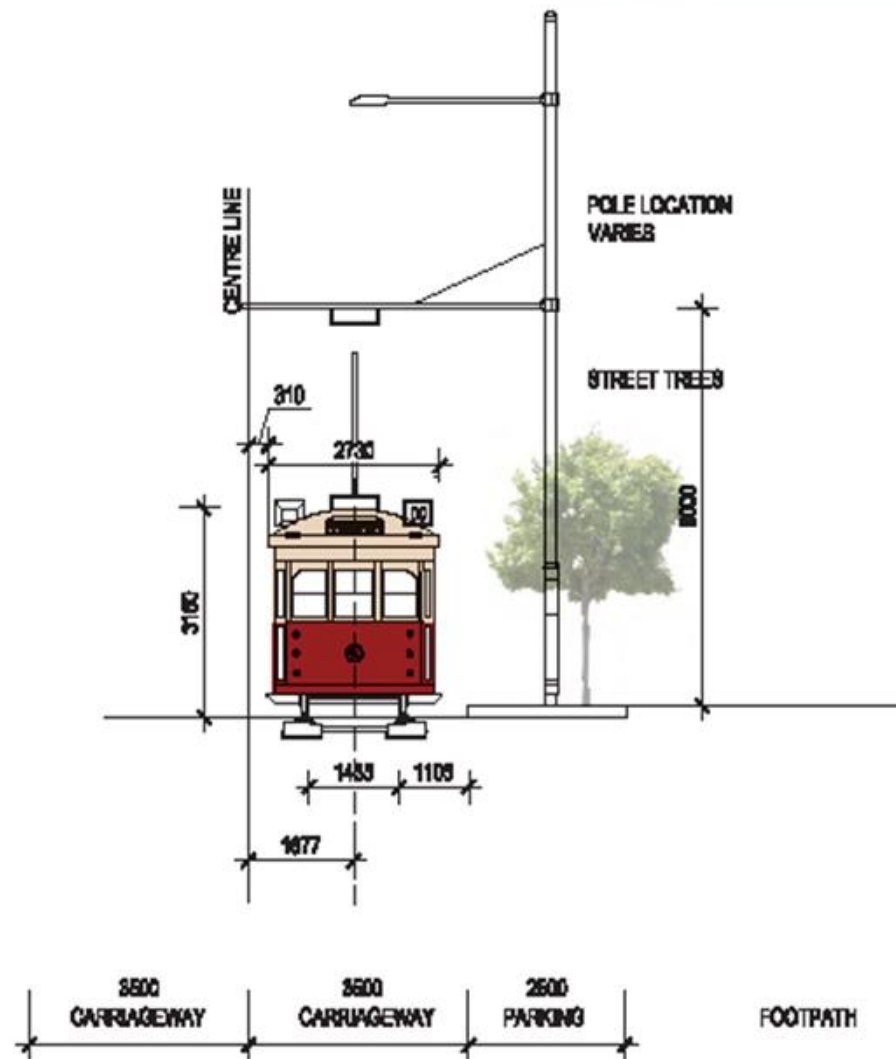
Melbourne Trams

- Can be procured in timeframes
- Retain Heritage nature
- Use standard gauge stock

Light Rail Option

TRAM POWERING

OVERHEAD WIRES



TRAM POWERING

ISSUES

OVERHEAD WIRES

- Marine / Heavy Traffic Interface
- Aesthetics

ALTERNATIVE POWERING

(batteries)

- Unproven technology
- Reliability
- Heritage compromise





FUTURE PROOFING

DRAFT FOR DISCUSSION

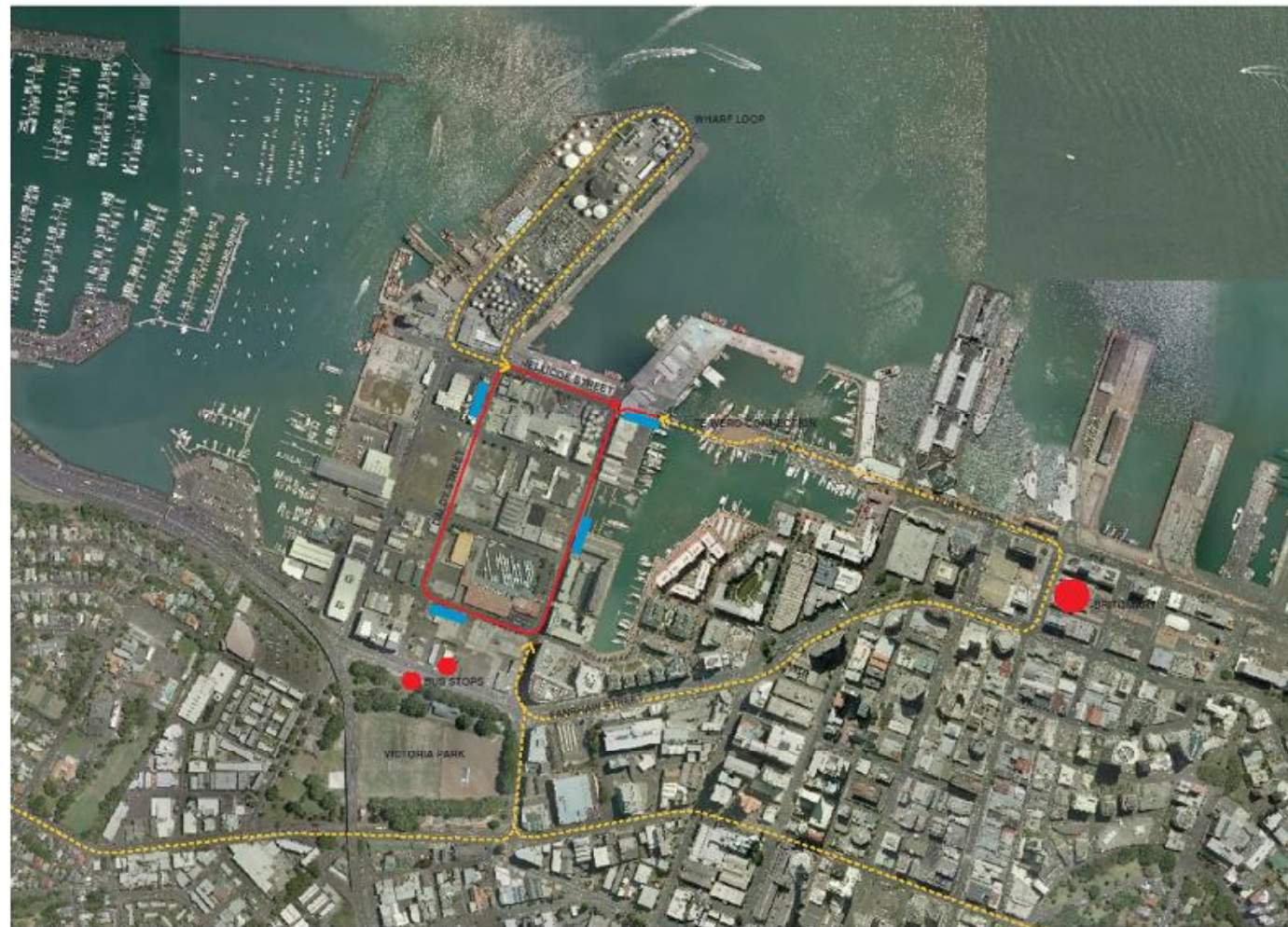


architectus

Architecture
Urban Design
Planning
Interior Architecture

Key:

- Heritage Tram Route
- Potential Connections
- Tram Stop



Wynyard Quarter: Heritage Tram

CBD CONNECTION

Job No 1022

July 2010

Prepared for Sea + City Projects Ltd

Drawing: Tram Route + Potential Future Connections | nts

Drawing no: SK1-01 Rev. A



FUTURE PROOFING

KEY ISSUES:

- Connectivity to future routes
- Standard track gauge compatible with Light Rail
- Overhead for trolley poles or pantographs
- Turnouts / Junctions





COMPLETION ?

(Stage 1)

In time for the Rugby World Cup 2011

Planned finish date is 15 August



END

Watch this space !