

What's in a Name ?

Craig Tooke – MTPA



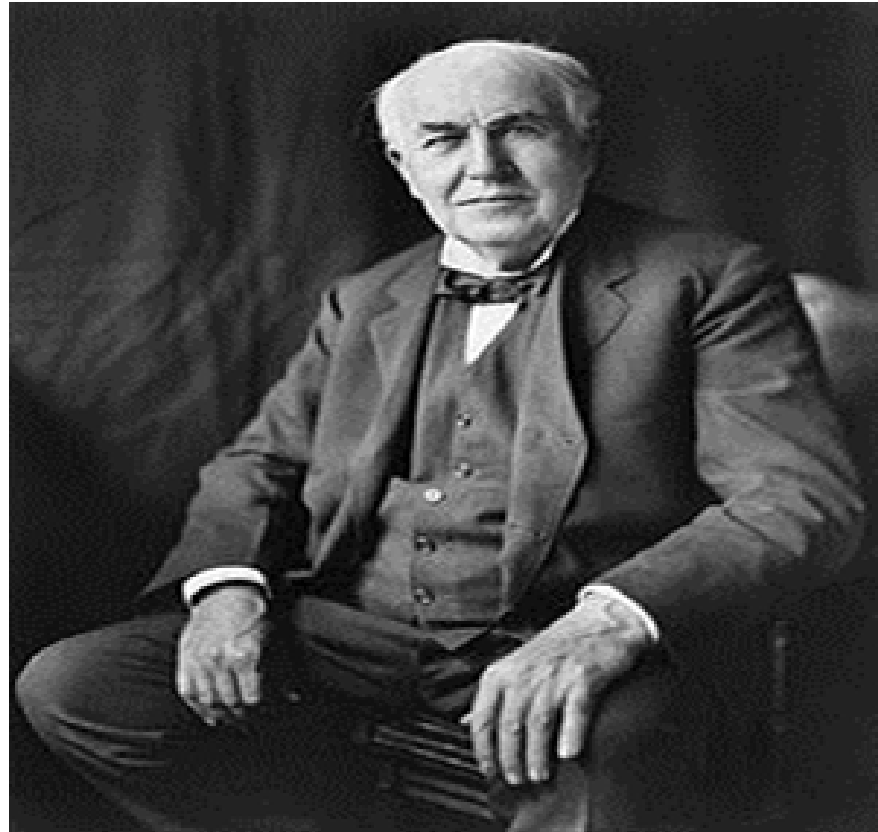
What do Genealogists, Pigeon Racers & Tram Enthusiast Have in Common ?

- Names & Numbers

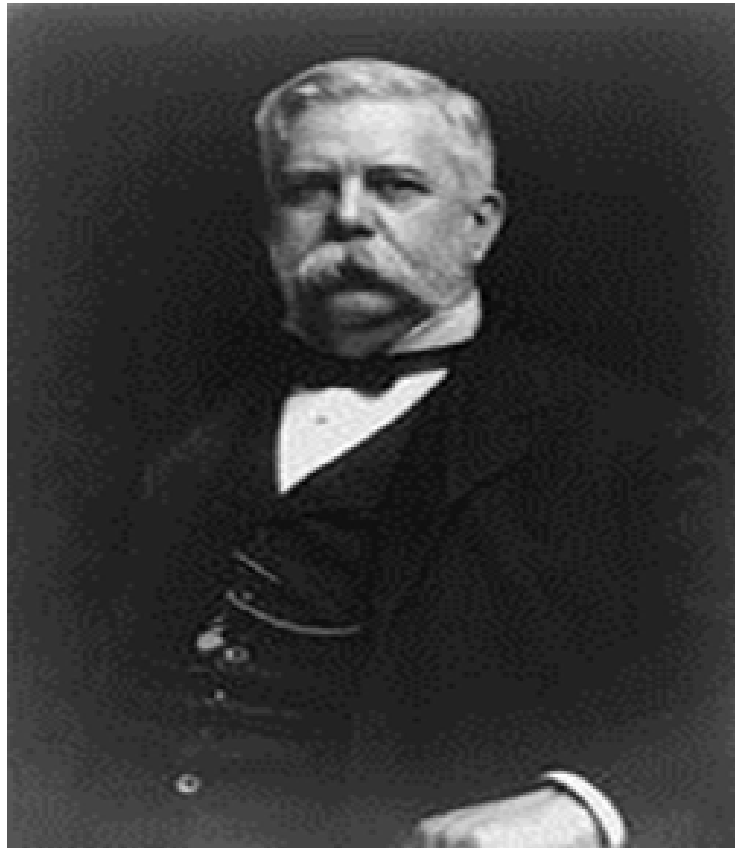
What Do All The Numbers & Letters Mean ?

- GE 247 AX
- K 35 AA2
- GE Type ML Governor
- Westinghouse DH16 Compressor

Thomas Edison



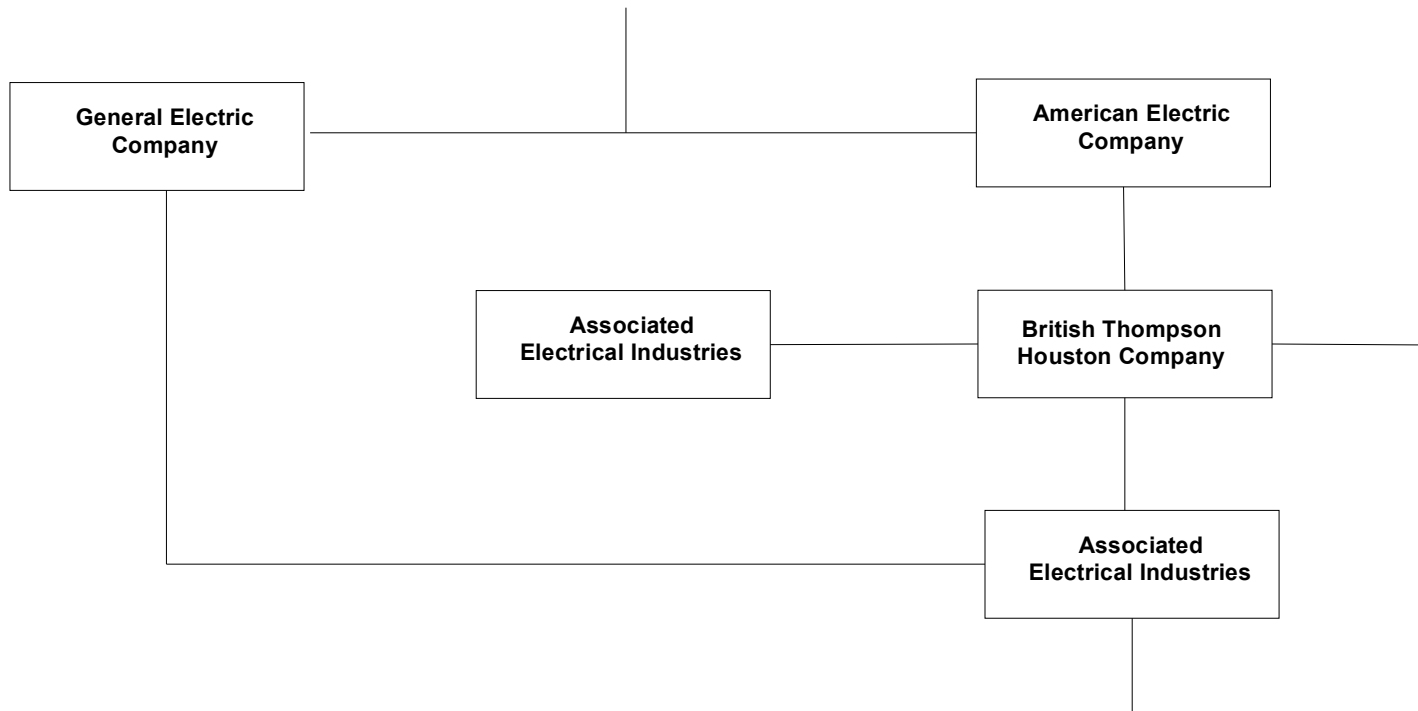
George Westinghouse



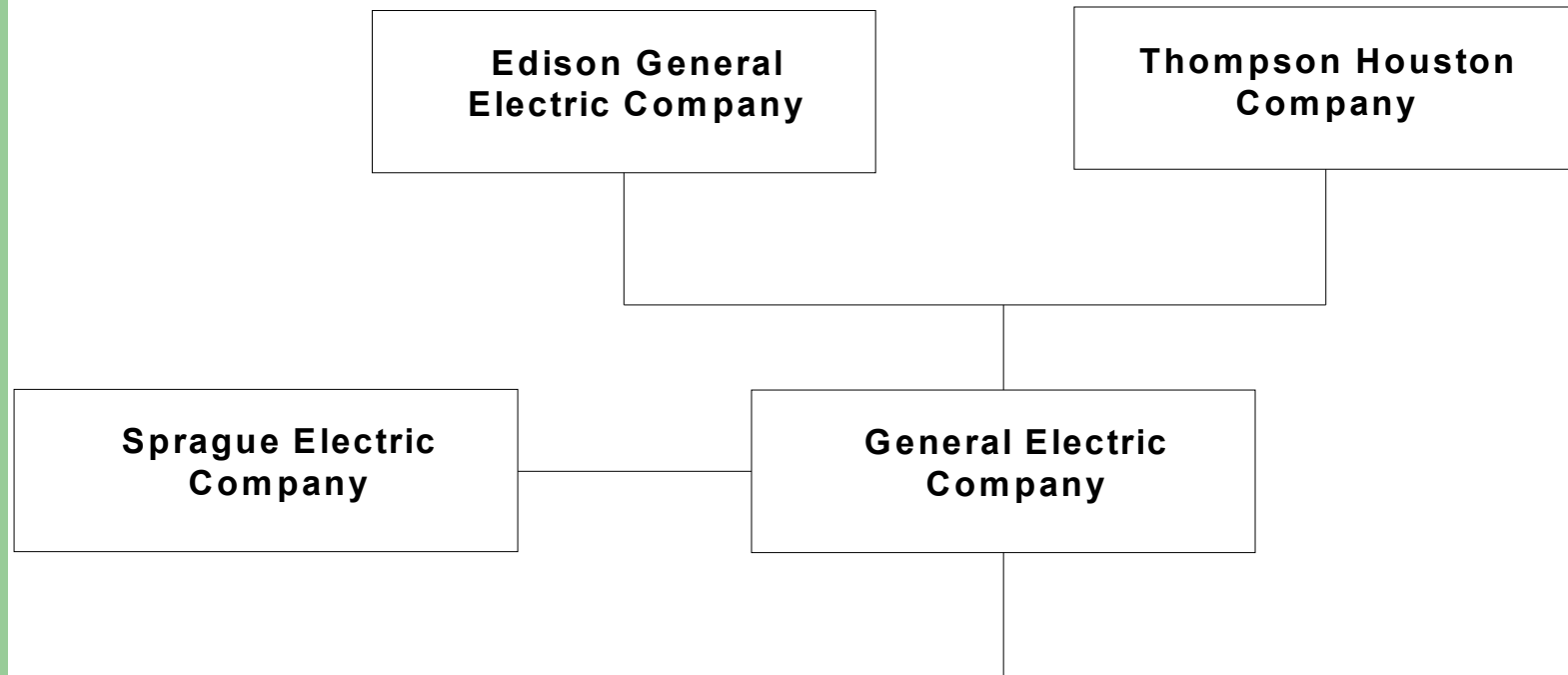
Frank Sprague



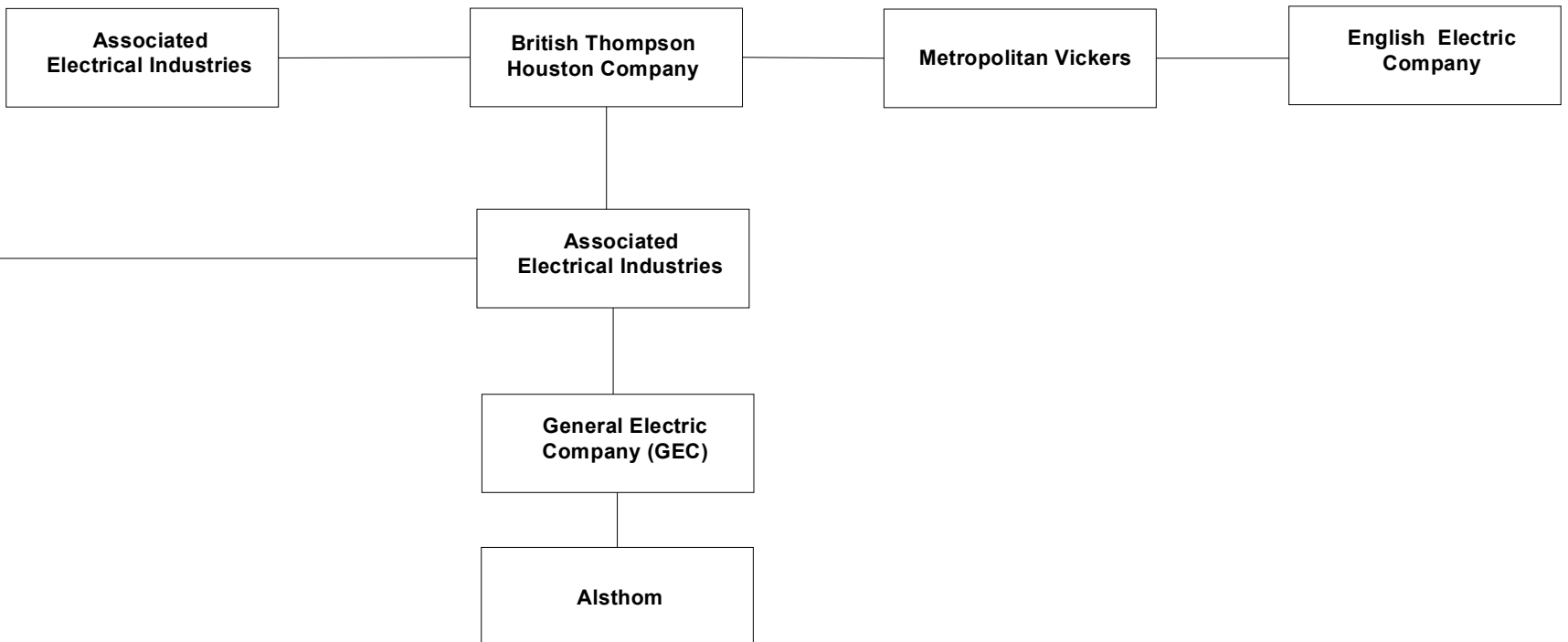
The Family History



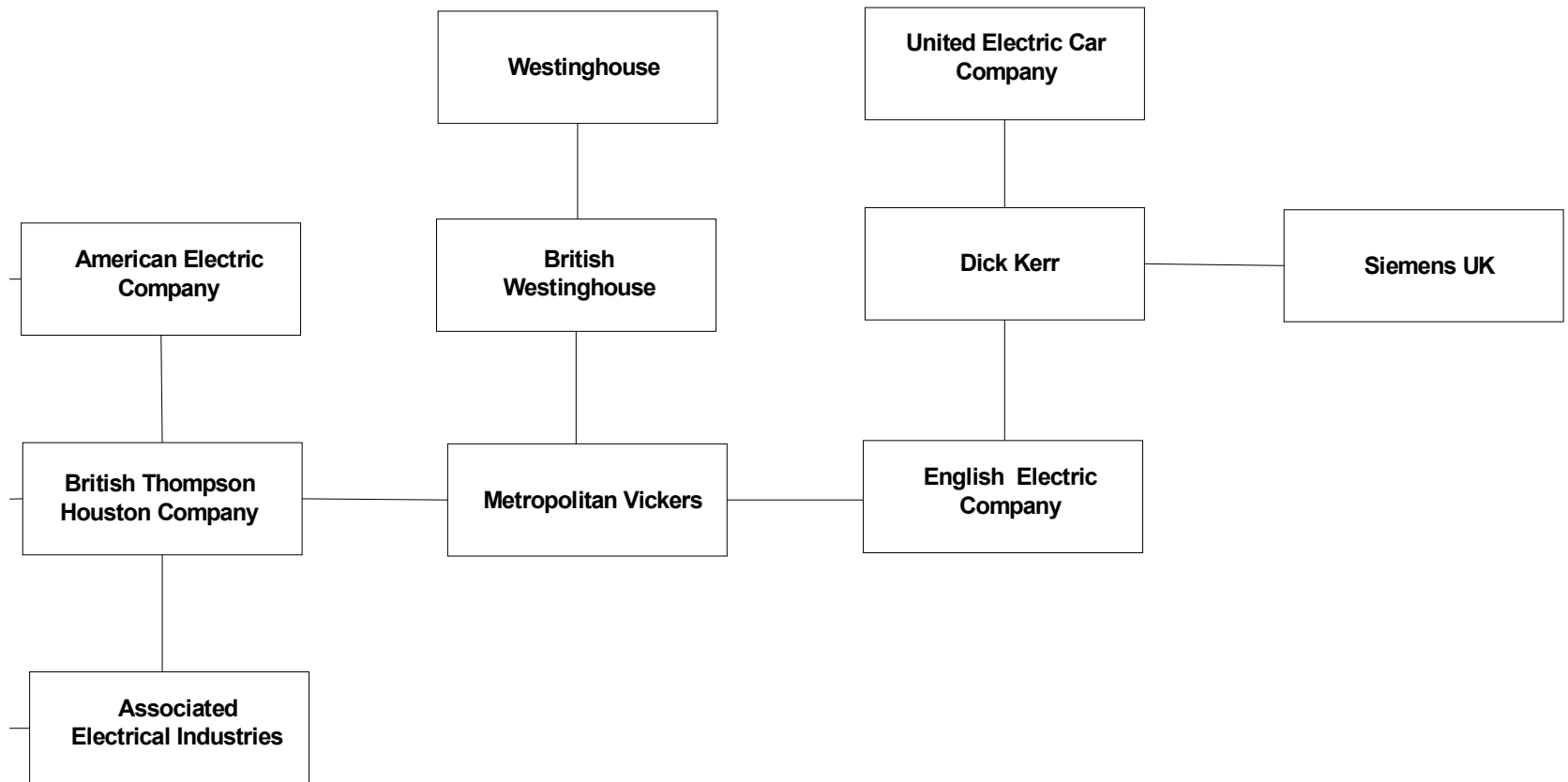
The Family History

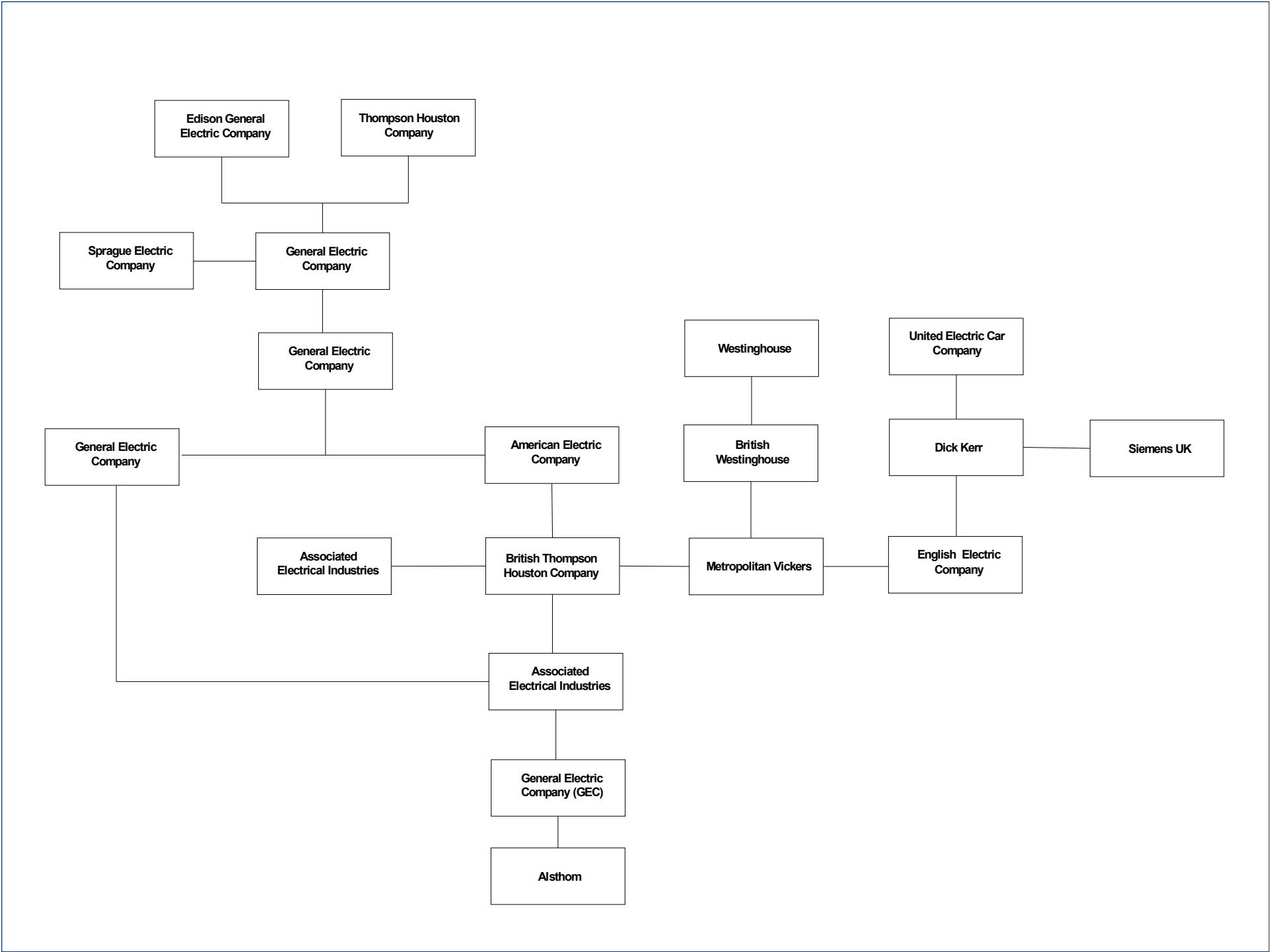


The Family History

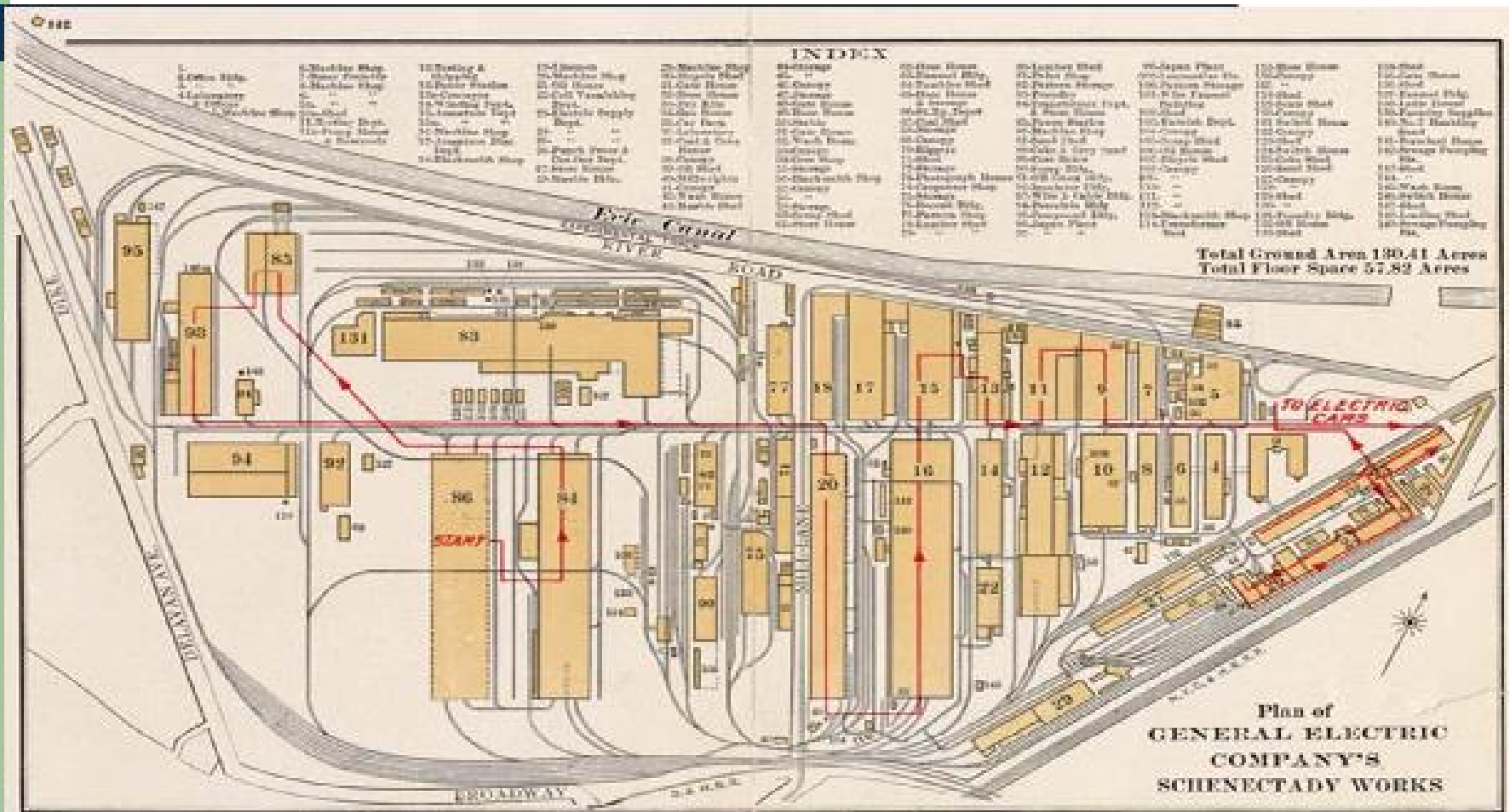


The Family History





General Electric - Schenectady



General Electric - Schenectady



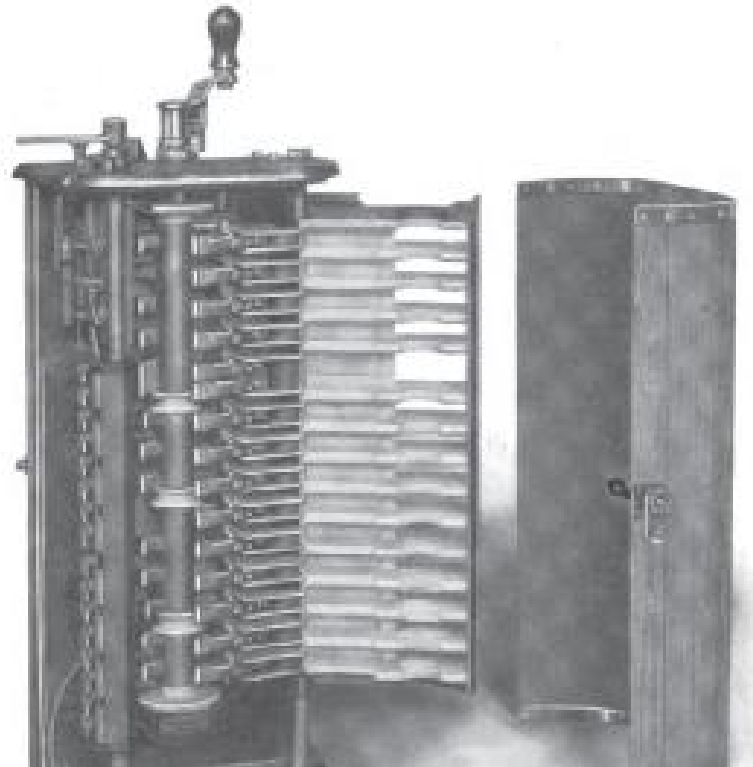
G.E. Controller Department



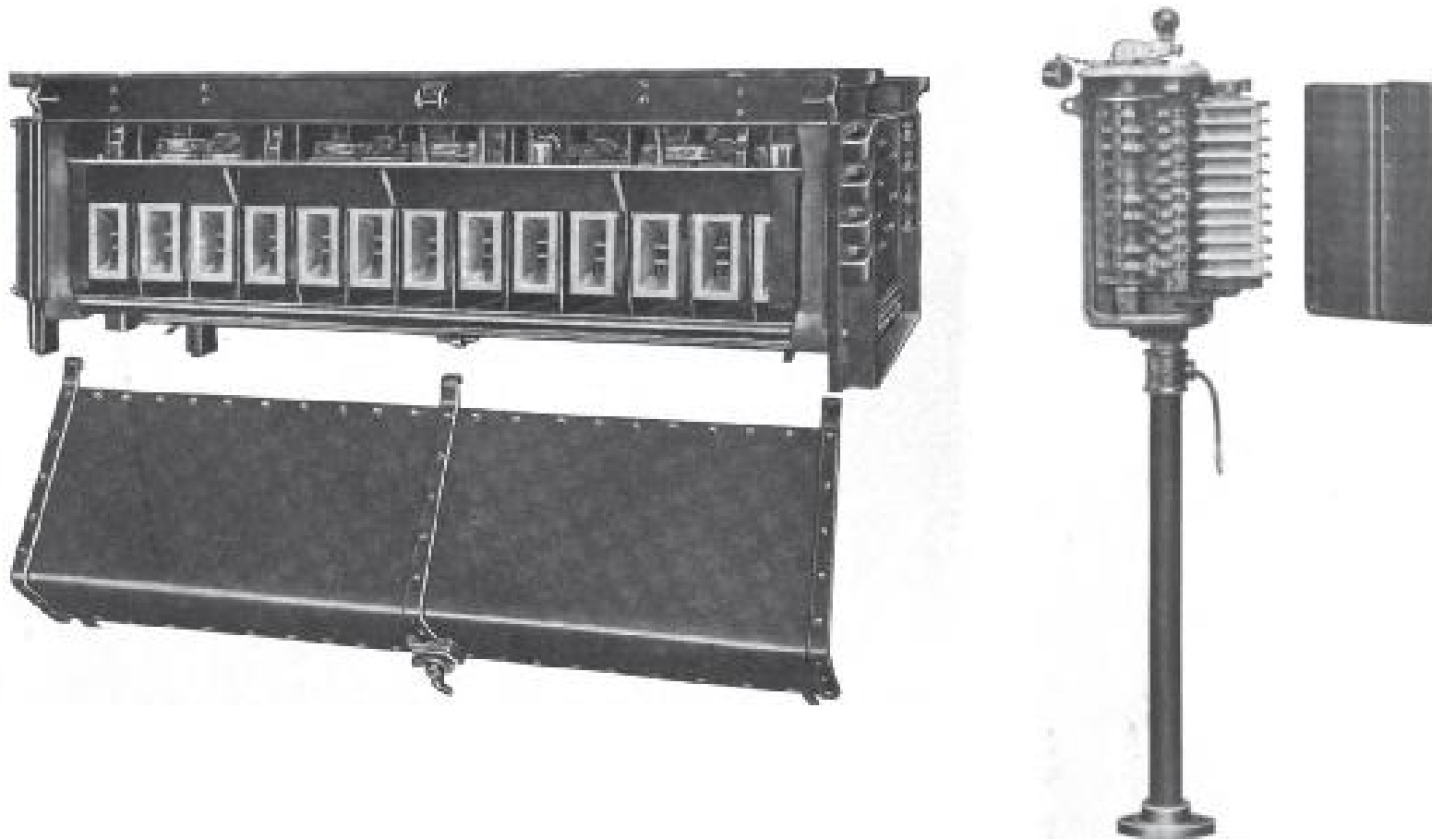
Controller Designations

- Type B – Incorporating Dynamic Braking Notches
- Type C – Electric Crane Controller
- Type K – Bridge Transition – Most Common Type
- Type L – Rheostatic Control – Heavy Electric Locos
- Type M – Multiple Unit Control
- Type PC – Pneumatic Control
- Type PCM – Pneumatic Control Multiple Unit
- Type S – Solenoid Control (very rare)
- Type T – AC or DC controller

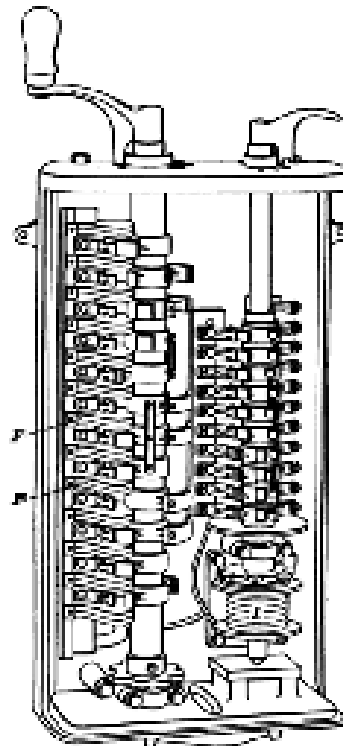
GE K35 Controller



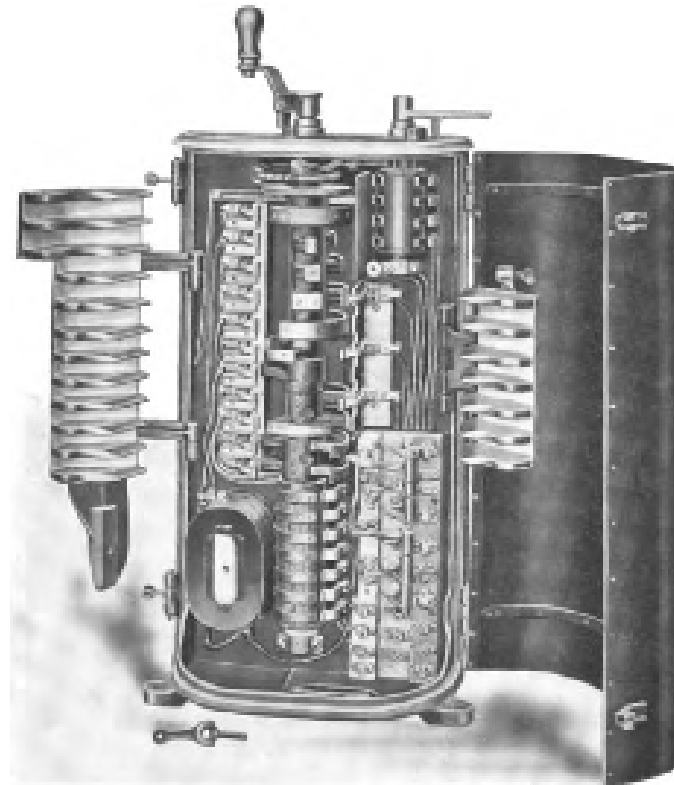
GE Type M Control



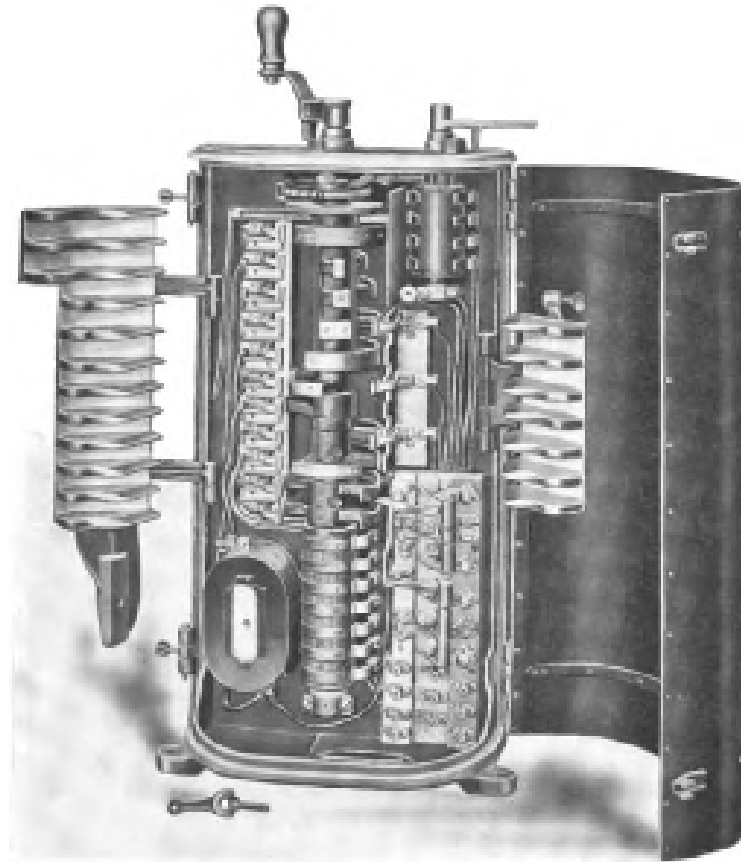
Type S Controller



GE B18 Controller



GE Type L3 Controller



GE Controller Designations

- Example GE K35 JJ
- GE – General Electric
- K – Type K controller (bridge transition)
- 35 – Model number
- J – Form J
- J – Type J of Form J

The Peace Treaty

- In 1896 & 1899 an agreement was reached whereby Westinghouse & General Electric agreed to share each others patents rather than go to court to settle disputes.
- This in effect gave them approximately 2/3 of the world market for electric traction equipment

Important !

- Not all controller numbers were consecutive
- Some controllers were only experimental and never released commercially to standardize range manufactured
- Sometimes replacement model for an existing controller involved reversing or adding existing numbers together. Example K36 controller replaced by K63 type

G.E. Resistor Department



General Electric – Railway Motor Department



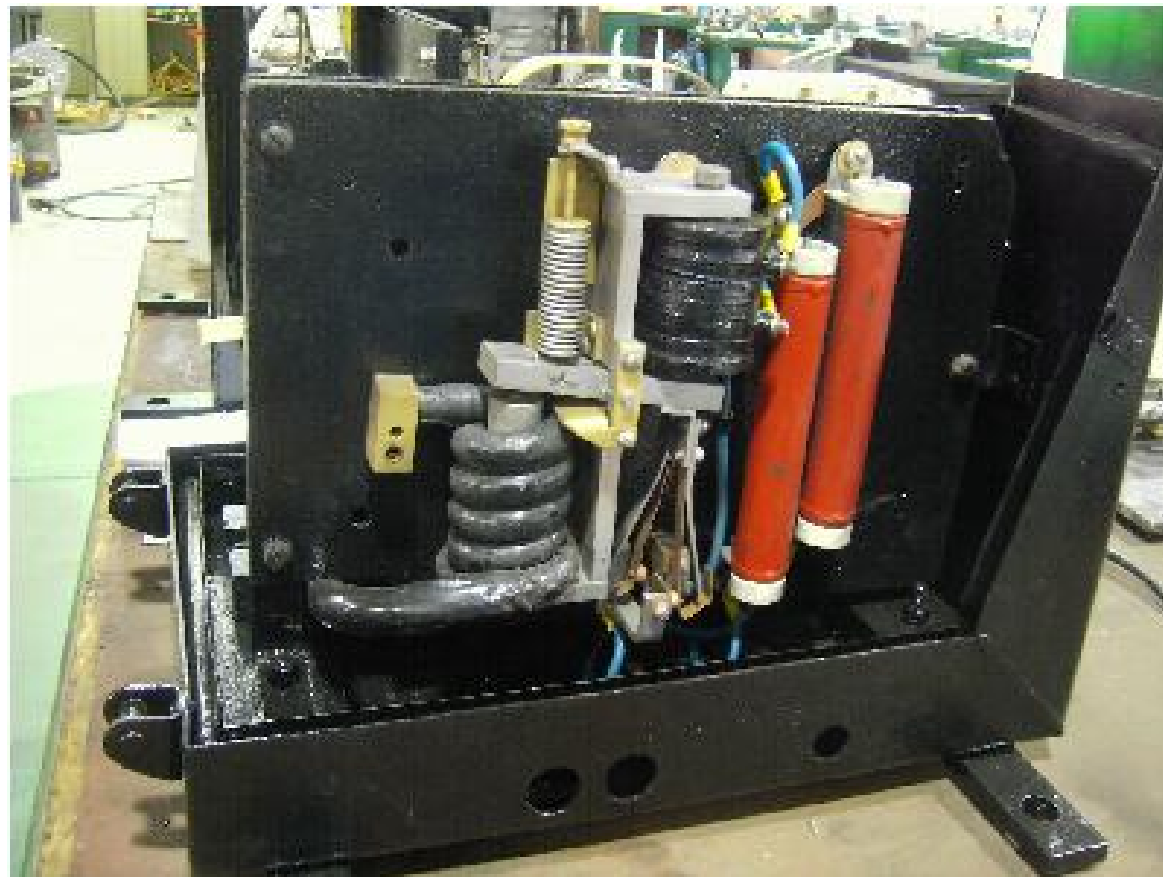
GE Traction Motors

- GE motors can have up to a 5 items description
- GE –manufacturer
- 247 –motor type 247 – 2 indicates fitted with interpole coils
- A –indicates the form or variation
- 1 – indicates sub form numeral – not always used
- X – Indicates the depth of the motor oil well

GE DB 976 Line Breaker



GE DB 976 Line Breaker



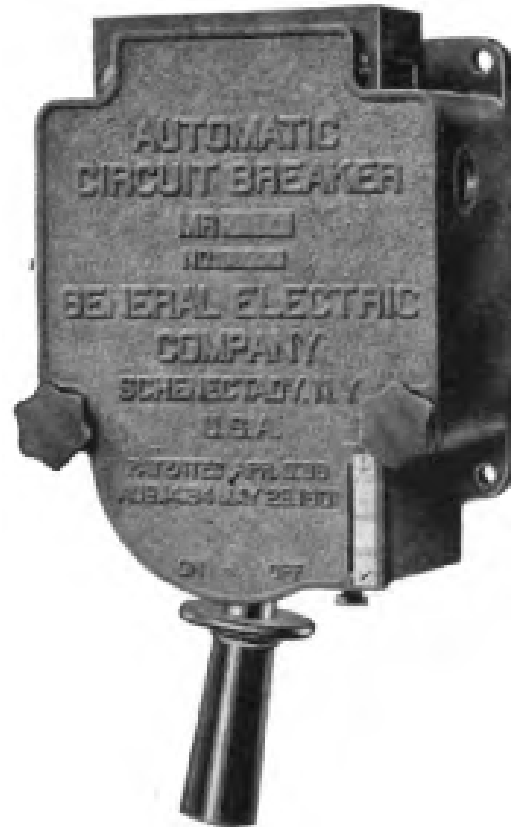
GE DB 976 Line Breaker

- D – Direct Current
- B – Capable of making & breaking load current (up to 650 amps)
- 976 – Model Number

Circuit Breakers, Governors & Switches

- M – Magnetic blowout fitted
- R – Type R
- Form –A – Sub type

GE Type MR Circuit Breaker – Form A



Conclusion

- A fascinating subject
- Not well document – further research needed
- Often confusing
- There is often more than meets the eye when it comes to tram electrical equipment



Questions ?????

