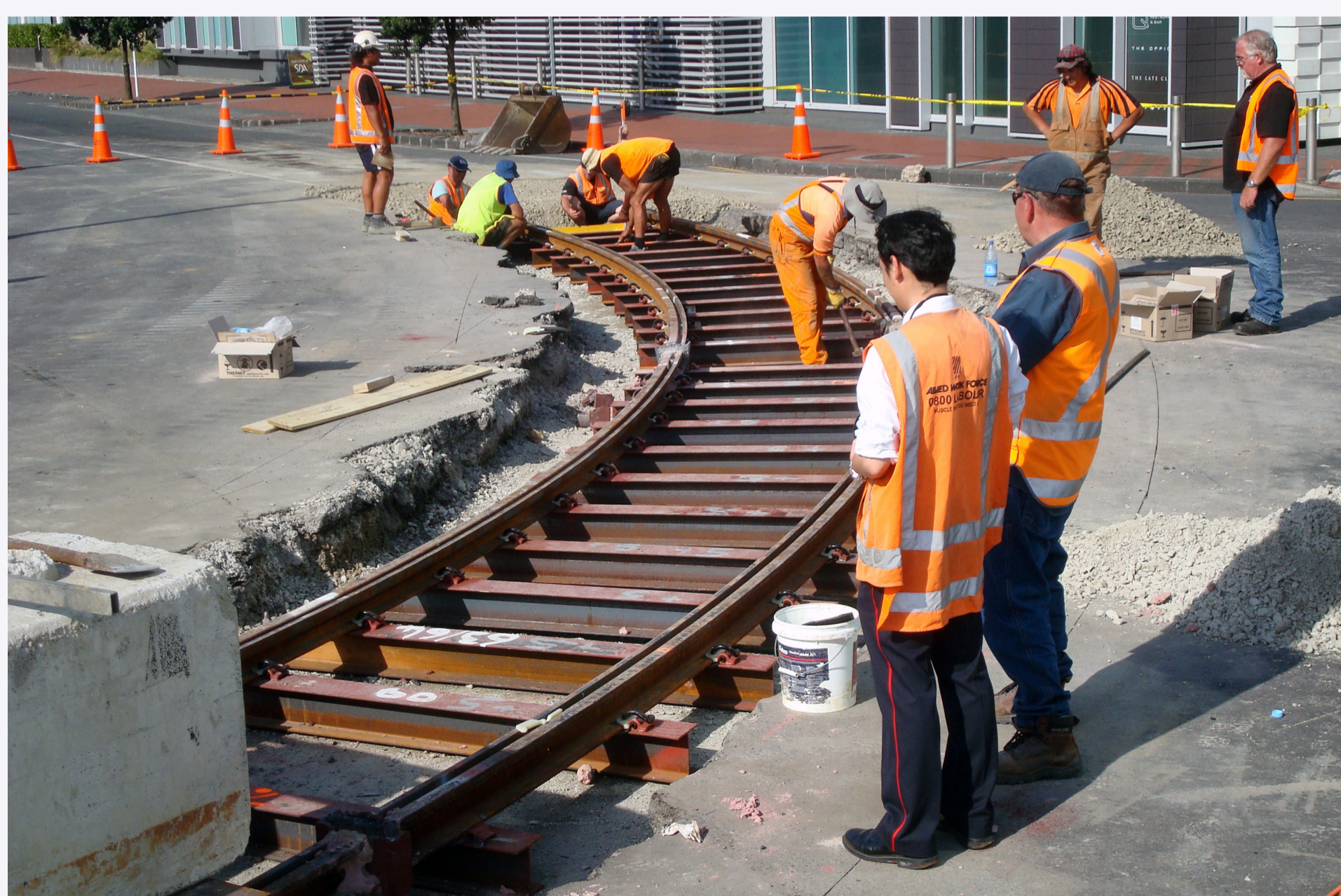




Some of the MOTAT team who operate the Dockline Tram. Trams 881 and 466 with from left; Andrew Garratt, Joshua Garratt, Charles Richards and James Duncan. 2021-08-07 Photo Joshua Garratt.

# Dockline Tram in Wynyard Quarter

The Dockline Tramway is a 1.5 km circular tour around Wynyard Quarter with a short commentary provided by the Tram Driver along the way. Launched in 2011, its purpose was to attract people down to Wynyard Quarter, which had only just begun its transformation journey from an industrial area to a waterfront neighbourhood. It operates every Sunday, Long Weekends/Public Holidays 10am to 4pm. Proudly operated by MOTAT in partnership with Panuku Development Auckland.



Welding of joints on newly laid track at the corner of Halsey Street and Gaunt Street.

2011-01-03 Photo Albert Chan



Forming of track bed prior to rail sets, pre rolled by Yarra Trams in Melbourne, being installed at the corner of Gaunt Street into Daldy Street.

2011-03-18 Photo Albert Chan





A welcoming rainbow at the Port of Auckland as the two ex-Melbourne trams arrive. Both trams refurbished and painted in Auckland 1930s tramway livery by Bendigo Tramways Trust. On the left is W2 No.421, renumbered 31 while operating in Bendigo and to be numbered 258 for the Dockline Tram operation. Tram No.466, an X1 Class, to be numbered 257 for the Dockline Tram operation.

2011-06-08 Photo courtesy Port of Auckland



With just five days before the official opening of the tramway and Wynyard Quarter, power was switched on and W2 No.258 makes the first test run, passing the Tram Shed in Daldy Street. Eight new tram drivers now need to be trained and licenced.

2011-07-29 Photo Albert Chan



Lined up in Jellicoe Street on opening day, City Councillor Mike Lee about to take No.466 round the 1.5km loop. Cr Mike Lee had been a driving force behind the creation of the tramway.

2011-08-06 Photo Albert Chan



After two years operation, the tramway closed for major road redevelopment, which saw an extension of Daldy Street through former Mobil Oil land. Track was uplifted from the reserved section beside the Tram Shed and moved over to the newly created street, with rain gardens being set up either side of the roadway.

2013-10-03 Photo Albert Chan



With the road redevelopment complete, the two trams make a test run through the new section of Daldy Street passing the Tram Shed.

2014-11-19 Photo Albert Chan



Time to go home – W2 No.258 is returning to Bendigo, being loaded on board the roll-on roll-off ship.

2015-05-24 Photo Hamish Gain, Champion Freight





Council Controlled Organisation Panuku, who were now running the Dockline Tram, managed to acquire two operational “modified” SW6 trams from Melbourne. Numbers 852 and 881 arriving at the Wynyard Quarter Tram Shed.

2015-07-31 Photo David Cawood



Following 13 months of refurbishment, No.881 commenced operation, painted in red and cream colours that were once the livery of the Auckland tram fleet during the 1930s. No.881 on a test-run, turning from Daldy Street into Jellicoe Street.

2016-11-13 Photo David Maciulaitis



After two years of non-operation, the Dockline Tram returned to Wynyard Quarter, now being operated for Panuku by the tramway team from MOTAT. Operating Sunday's, long weekends and public holidays, the tram has become a popular feature of a visit to the Quarter. Shortly before the 2018 closure, tram No.257 was updated and given a fresh coat of paint, which also saw the tram having its original fleet number returned – No.466, shown above loading in Daldy Street.

2021-07-04 Photo Joshua Garratt.

