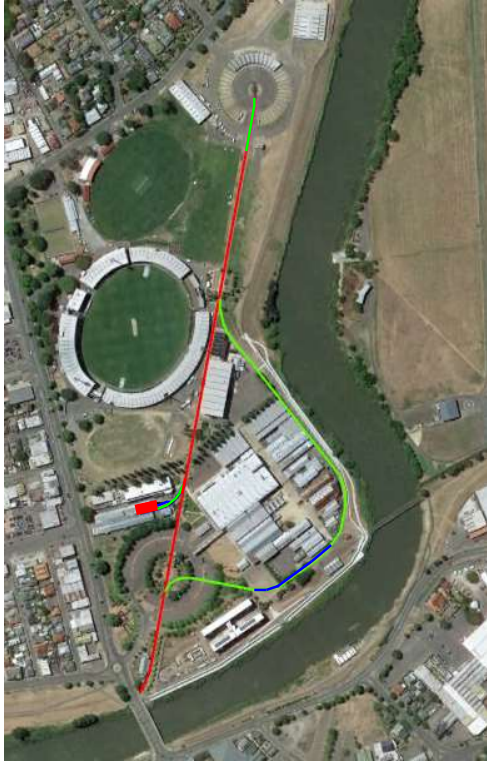


LAUNCESTON TRAMWAY MUSEUM

TRACKWORK REHABILITATION

The Launceston Tramway Museum with operation of Launceston bogie tram No 29 on 1.6 kilometres of 1,067 mm (3 ft 6 in) gauge track is located in the Inveresk precinct of Launceston, Tasmania. The former Tasmanian Government Railways workshops in the Inveresk precinct were closed in 1994 and a transformation project included moving the museum section of the Queen Victoria Art Gallery and Museum, and parts of the northern campus of the University of Tasmania to the site. Some existing sections of track with timber sleepers were retained and a new 0.8 kilometre section of track laid in concrete. The transformation work on the site was completed around 2001. The tramway museum opened in 2006. Rotting of the timber sleepers and planned significant new construction by the university around 2018, prompted a replacement of much of the timber with steel sleepers, and replacement of point work set in concrete, requiring close coordination of this work with the City of Launceston, the University of Tasmania and construction contractors. Approximately \$200,000 of funding for the supply of new and second-hand steel sleepers with fittings, and installation by the local contractor Killa Earthworx, was provided by the Philip Archer Museums Trust. The whole project has taken six years and has provided a long-term basis for the museum's tramway.



Plan: Google Earth/Tony Weston

Plan of the Inveresk precinct showing the 1.6 km of track used by the LTMS. Original track in concrete is shown in red, rehabilitated track on open ballast or with concrete is shown in green, and remaining timber sleeper track in blue.

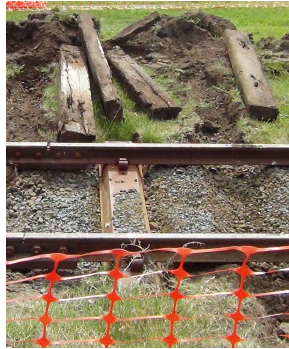


Photo: Graeme Davis
Rotten timber sleepers were removed.



Photo: Graeme Davis
Old track bed removed ready for laying a new track bed and ballast.

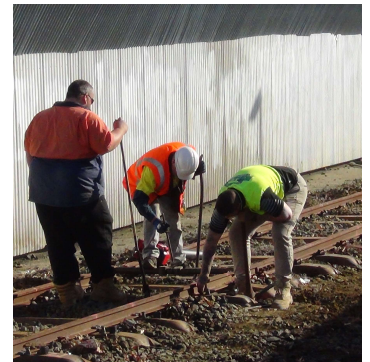


Photo: Graeme Davis
Working on the clips holding the rails to steel sleepers.



Photo: Tony Weston
Launceston Tramway Museum tram No 29 and the new University of Tasmania northern campus library building.



Photo: Tony Weston
Detail of the clips holding the rails to steel sleepers.



Photo: Graeme Davis
Rails removed from the timber sleepers and set aside were moved back to the line of the track.



Photo: Tony Weston
Concreting of replacement point work.



Photo: Tony Weston
Completed trackwork with sleepers covered in concrete and asphalt, with the railway turntable and a tribute to the former locomotive roundhouse behind.

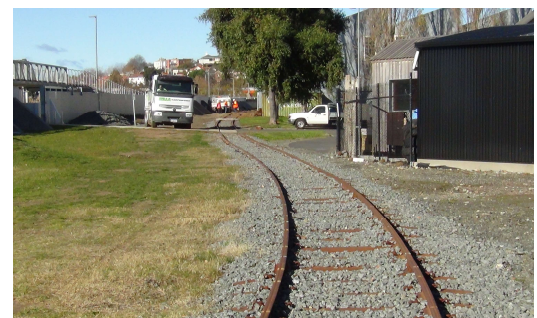


Photo: Graeme Davis
Completed trackwork with ballasted steel sleepers.